

Spare Parts Catalogue

CX14 (II Ed.) AC EVO LI-ION S2 1150x525

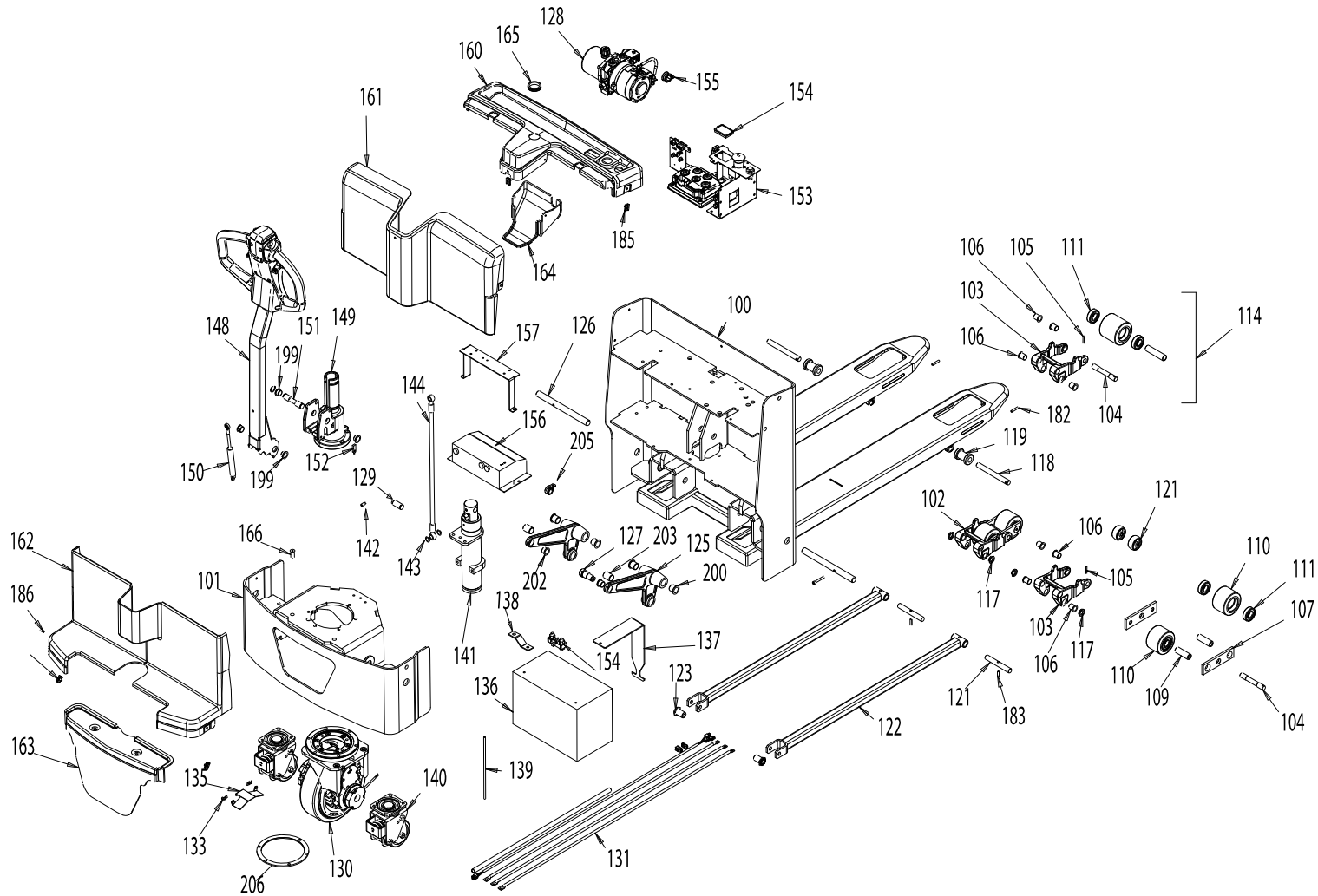
Electronic pallet trucks

Valid for machine code: ED241M0P000

Revision: 0 (06/2019)

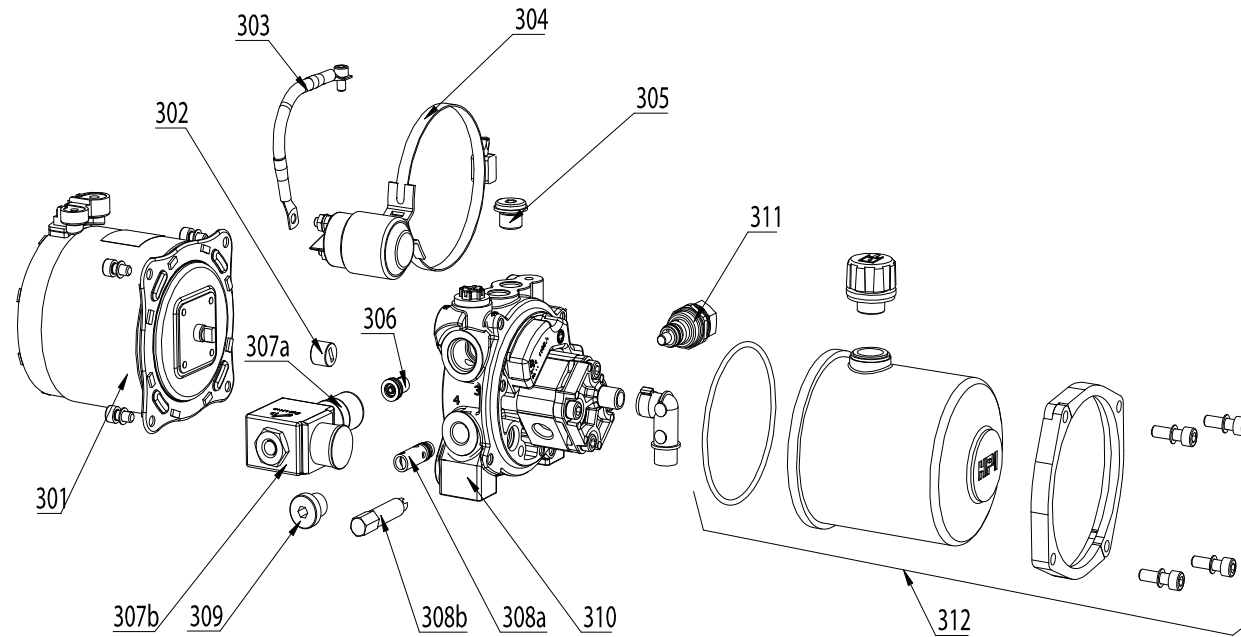
CX14 (II Ed.) AC EVO LI-ION S2 1150x525 - Machine code:
ED241M0P000

Spare Parts Catalogue CX14 (II Ed.) AC EVO LI-ION S2 1150x525 -
Revision: 0 (06/2019)

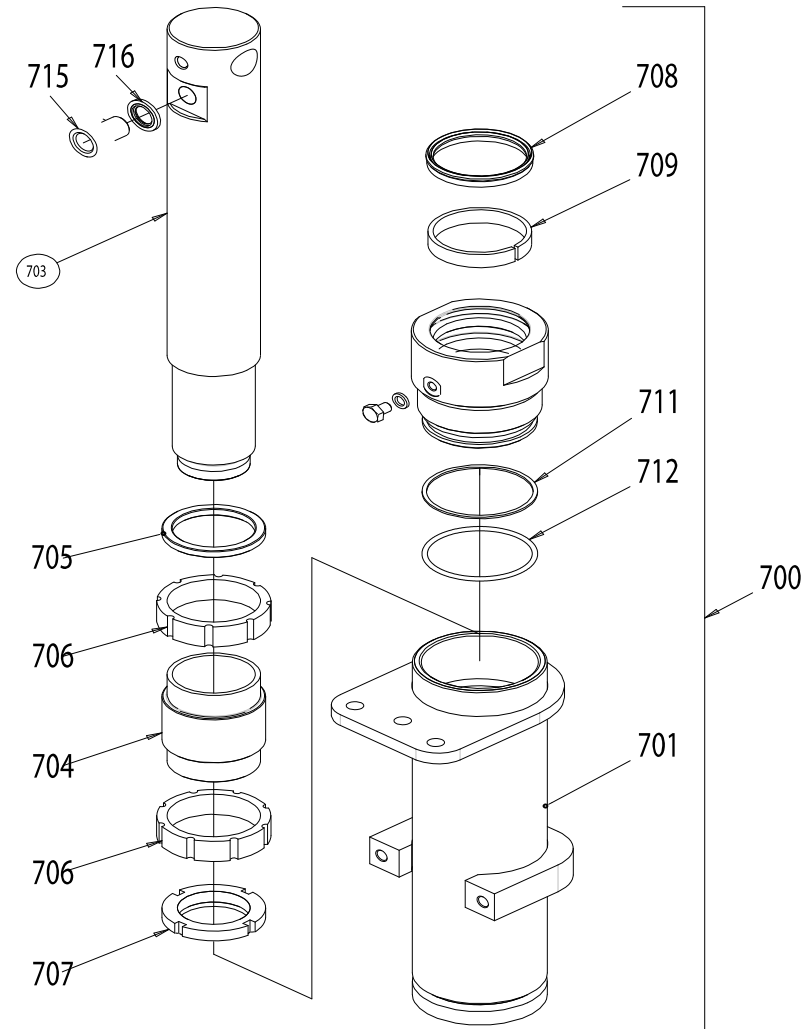


POSITION	PART NUMBER	DESCRIPTION	NOTES
100	V000050046-PRAMAC	PAINTED FRAME 1150x525 CX14 II Ed.	
101	V000050049-PRAMAC	PAINTED DRIVE WHEEL PORTAL CX14 II Ed.	
102	S000050050	ROLLER TANDEM POLY.C Ø82x60 + CLEVIS WITH BUSHINGS GS-CX 14	
103	S000031020	GEOMET DOUBLE CLEVIS GS SILENCE	
104	S0002205039	TANDEM CONNECTION PIN GS	
105	G044307	ELASTIC PEG 6873 D 4x30	
106	G016323	FLANGED SELF LUBR. BUSHING KF 16x18x24x21	
111	G010401	BEARING 6204 2RS (20-47-14)	
114	S000050061	ROLLER POLY.C Ø82x82 + CLEVIS WITH BUSHINGS GS-CX 14	
115	G056206	POLYURETHANE ROLLER D82x80	
116	S0002206023	SINGLE ROLLER SPACER GS	
117	S000003910	NYLON CLEVIS-SUPPORT SPACER	
118	S000003305	REFERENCE PIN GS SILENCE	
119	G056104	EXIT NYLON ROLLER D38 GS	
120	G056103	ENTRY ROLLER FORK TP/E-GS	
121	S000015508	PUSH ROD-CLEVIS PIN CX14	
122	S000015009	BIELLA CX14 L1150 SALDATA	
123	S000015507	CAM CX14	
124	G020272	SCREW HEX-HEAD 5739 65 8.8 M12x20 ZN + TREATMENT 3M SCOTCH-GRIP 2353 360°	
125	S000050053	MACHINED HALF ROCKER ARM CX14 II Ed.	
126	S000050055	PERNO SEMIBILANCIERE-TELAIO CX14 II Ed.	
128	G081049	HYDRAULIC POWER PACK HPI 3G MOTOR 1,0kW WITH RELAY; PUMP 0.75cc; ON/OFF VALVE; TANK 0.5l HORIZONTAL MOUNTING; FLOW LIMITER Ø1.8	
129	S000050052	UPPER CYLINDER PIN CX14 II Ed.	
130	G074479	DRIVE WHEEL AC 700W 24V WITH BEARING CX 14 II Ed.	
131	S000050004	DRIVE WHEEL WIRING CX14 II Ed. EVO	
132	G041903	PLAIN WASHER 6592 6.4x12.5 ZN	
133	G049307	MORSETTO PER FISSAGGIO IN ACCIAIO	
135	S0303010153	MOTOR WHEEL WIRING BRACKET L10-L16	
136	G089039	LITHIUM BATTERY ZENITH LiFePO4 24 V 50Ah	
137	G08689	BATTERY BRACKET CX14 II Ed. EVO Li-Ion	
138	G08688	COPPER BATTERY CONNECTION CX14 II Ed. EVO Li-Ion	
139	S000050065	BATTERY FIXING THREADED BAR CX14 II Ed. Li-Ion	
140	G053441	SWIVELLING WHEEL CX14 II Ed.	
141	S000050051	ASSEMBLED CYLINDER CX14 II Ed.	
144	S000050900	HYDRAULIC TUBE R1AT 1/4 BANJO 1/4+BANJO 14 L=560 mm	
148	S000050001	TILLER ASSEMBLY CX14 II Ed. EVO	

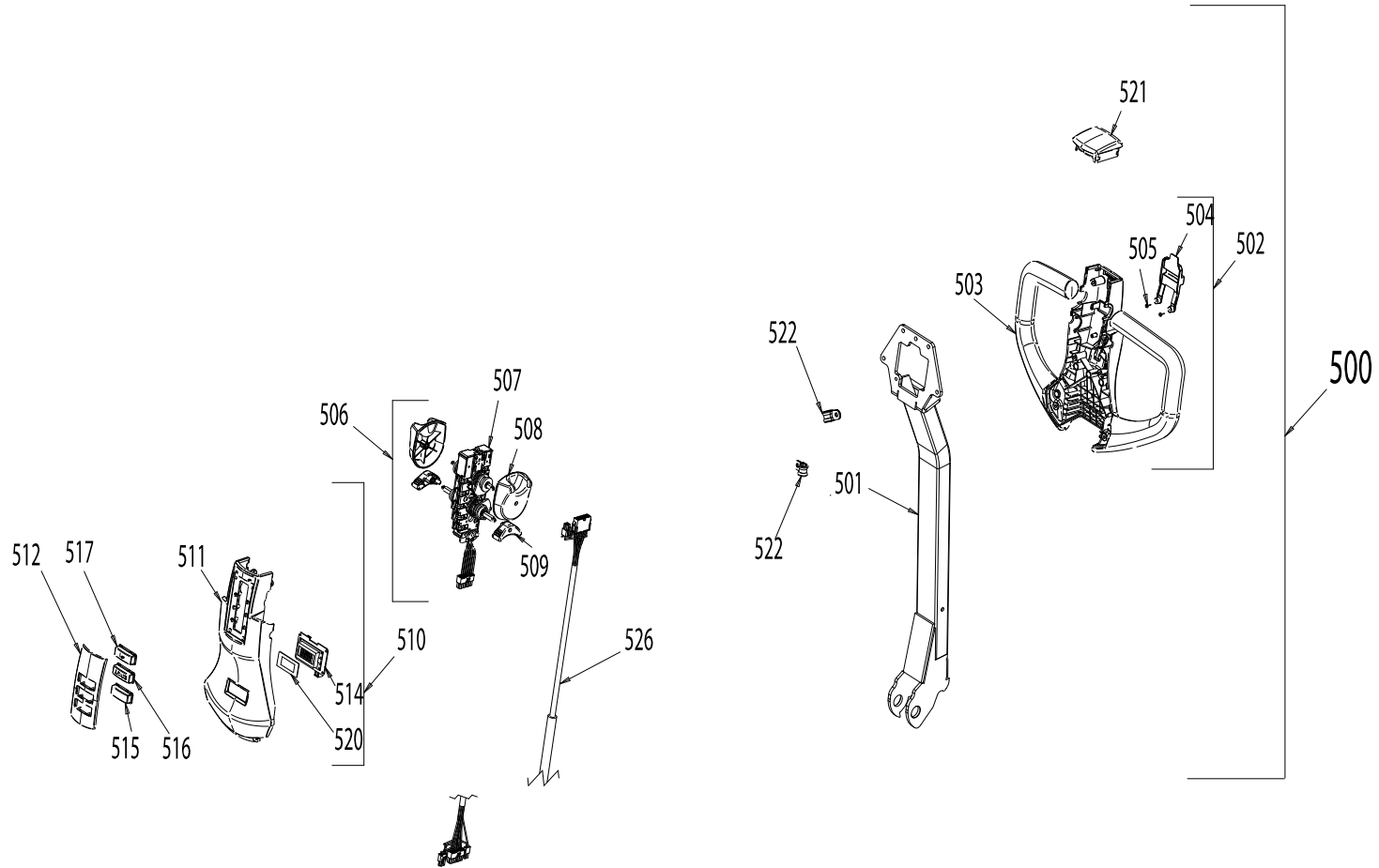
POSITION	PART NUMBER	DESCRIPTION	NOTES
149	S000050059	MACHINED TILLER SUPPORT CX 14 II Ed.	
150	G001734	GAS SPRING CX 14 II Ed. AMA R20 U06 LTA 230mm 350N	
151	S000050058	TILLER PIN CX 14 II Ed.	
152	S000050018	WIRED TILLER SENSOR CX14 II Ed.	
153	S000050005	WIRED PLATE CX14 II Ed. EVO Li-Ion	
154	S000050909	KIT DISPLAY+SHUNT LITHIUM BATTERY CX14 II Ed. Li-Ion	
155	G070416	COLLARE FERMATUBO PG.25	
156	S000050908	HIGH FREQUENCY BATTERY CHARGER 24V 30A CX14 EVO Li-Ion +IEC PRESS. +SPIRAL WIRE SCHUKO-IEC	
157	G08659	BATTERY CHARGER WIRING BENT PLATE CX14 II Ed. EVO Li-Ion	
160	S000050907	UPPER BEARING COVER CX 14 II Ed. Li-Ion	
161	S000050903	UPPER BATTERY COVER CX 14 II Ed.	
162	S000050910	CARTER BATTERIE INFERIORE CX 14 II Ed.	
163	S000050905	LOWER INSERT COVER CX 14 II Ed.	
164	S000050906	BATTERY CHARGER CABLE BOX CX 14 II Ed.	
165	G070244	FAIRLEAD KB 35-39-45-4	
166	G040115	RUBBER RIVET M6x1,0 L=26,7	
182	G044304	ELASTIC PEG 6873 D 6x32	
183	G044317	ELASTIC PEG 6873 D 6x24	
199	G016325	FLANGED SELF LUBR. BUSHING KF 18x20x26x11	
200	G016321	FLANGED SELF LUBR. BUSHING KF 20x23x30x21	
202	G016320	FLANGED SELF LUBR. BUSHING KF 18x20x26x15	
203	G016322	SELF LUBR. BUSHING KU 20x23x30	
205	G070407	TUBE HOLDER COLLAR DIAMETER 16, WIDTH 16, HOLE Ø8.5, MATERIAL W3	
206	G051974	THERMOPLASTIC RUBBER GROMMET Ø32 TRG 1375-1250	



POSITION	PART NUMBER	DESCRIPTION	NOTES
302	PCJ00002	MOTOR COUPLING	
305	PCJ00005	CAP	
307	PCJ00007	ELECTROVALVE	
311	PCJ00011	PRESSURE VALVE	
312	PCJ00012	TANK 0,5Lt.	



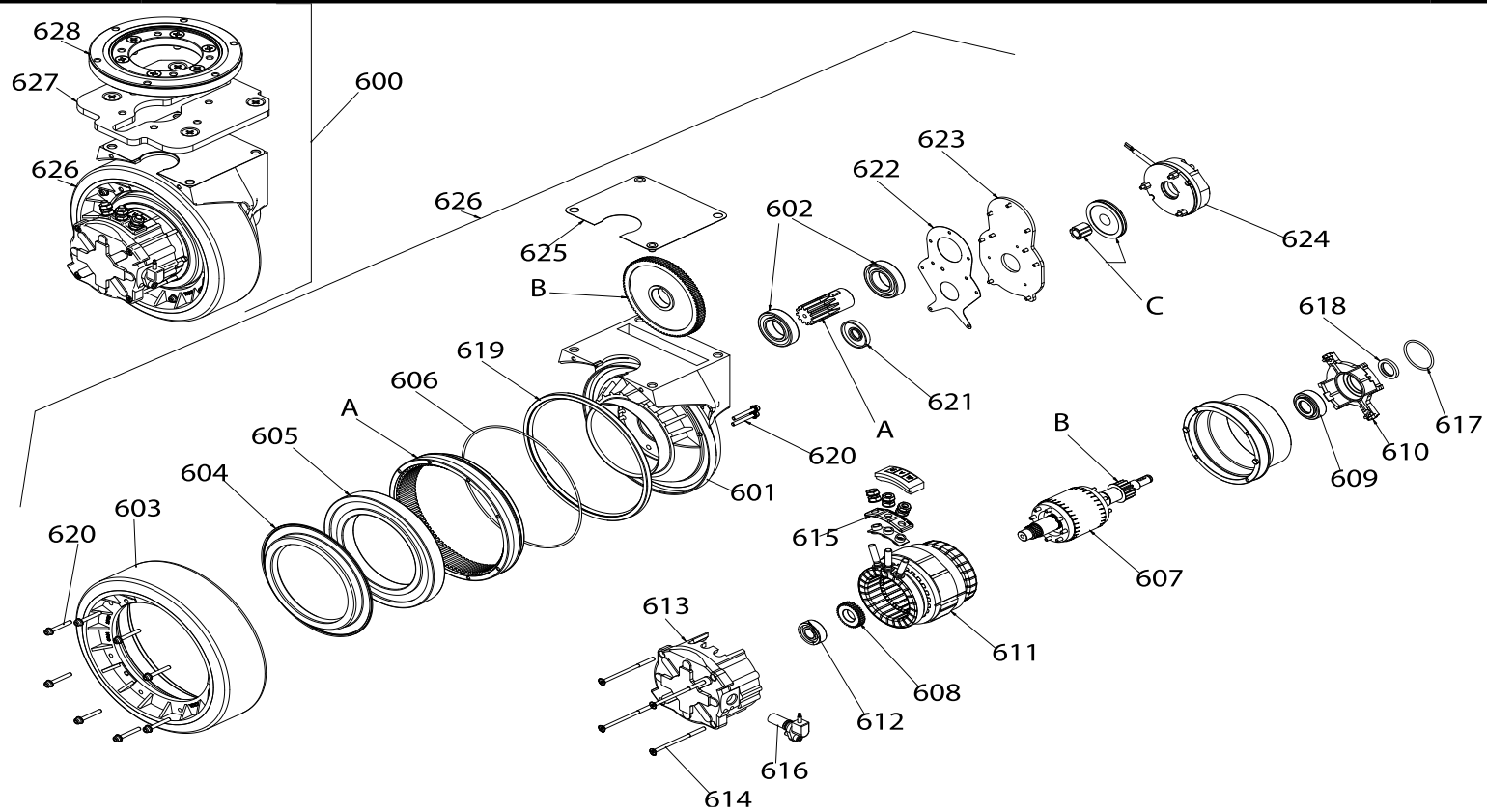
POSITION	PART NUMBER	DESCRIPTION	NOTES
700	S000050051	ASSEMBLED CYLINDER CX14 II Ed.	
701	S000050600	WELDED CYLINDER CX14 II Ed.	
702	S000050608	CYLINDER BUSH CX14 II Ed.	
703	S000050606	CYLINDER ROD CX14 II Ed.	
704	S000050605	GUIDE RINGS HOLDER CYLINDER CX14 II Ed.	
705	S000070615	FORK LIFTING CYLINDER SPACER L=5 GX12/29 III ED. FL	
706	S000070621	SPLIT CYLINDER GUIDE FSP 55-45-15	
707	G099010	SELF LOCKING FERRULE GUK M35x1.5	
708	G095117	SEAL TTI 1634 45-55-8	
709	G099009	GUIDE RING 45-50-9.7	
710	G095065	O-RING Ø56.82x2.62 NBR 70	
711	G095064	BACK UP RING GKS FOR O-RING Ø 50.47x2.62	
712	G095056	O-RING Ø 50.47x2.62 NBR 70	
713	G022036	SCREW HEX-HEAD 5739 65 8.8 M6x8 ZN	
714	G096401	RONDELLA RAME 6x10x1.5	
715	G084105	ADAPTER MALE 1/4-FEMALE 1/4 L=25.5	
716	G096215	SELF-CENTERING BONDED WASHER 1/4"	
717	G098122	WIPER KASTAS K27-45	



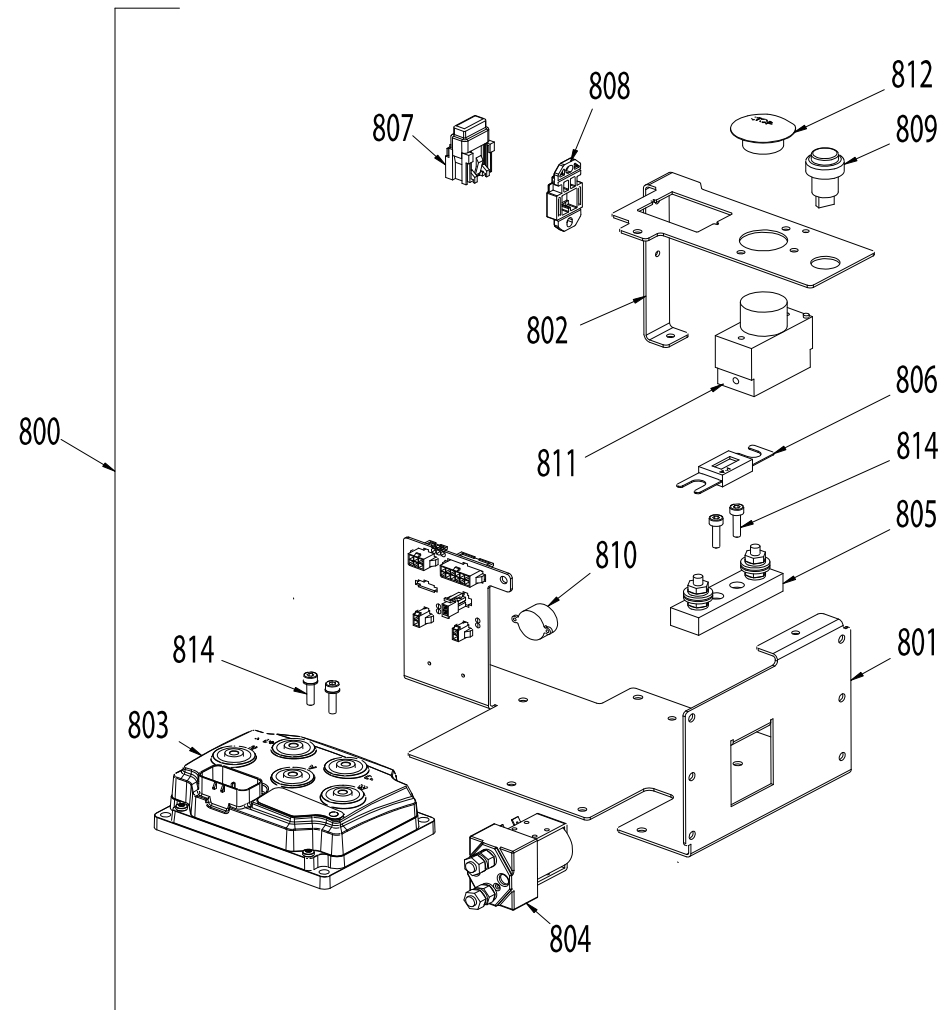
POSITION	PART NUMBER	DESCRIPTION	NOTES
500	S000050001	TILLER ASSEMBLY CX14 II Ed. EVO	
501	V000050057-9005	TILLER ARM CX14 II Ed. EVO PAINTED	
502	S000023004	PREASSEMBLY BACK STEERING '14	
503	G0P604	REAR SHELL TILLER HEAD '14	
504	S000023014	PAD PRINTED CREEP SPEED ROCKER ARM TILLER HAED '14	
506	S000023010	ASSEMBLY FREI CONTROLLER TRACTION + ON-OFF FORK CONTROL + PROPORTIONAL FORK CONTROL + BUTTERFLIES	
507	S000023010	ASSEMBLY FREI CONTROLLER TRACTION + ON-OFF FORK CONTROL + PROPORTIONAL FORK CONTROL + BUTTERFLIES	
508	G0P600	FARFALLA TRAZIONE TIMONIERA '14	
509	G0P601	FARFALLA SOLLEVAMENTO PROPORZIONALE TIMONIERA '14	
510	S000023023	PRE-ASSEMBLED 2 BUTTONS FRONT GROUP TILLER EVO	
511	G0P603	FRONT SHELL TILLER HEAD '14	
512	G0P605	PATCH 3 HOLES TILLER HEAD '14	
514	G079899	DISPLAY TILLER HEAD '14	
515	G0P602	RAW BUTTON TILLER HEAD '14	
516	S000023024	PAD PRINTED "BOOST" BUTTON TILLER EVO	
517	S000023002	PAD PRINTED HORN BUTTON TILLER HAED '14	
518	G044408	CYLINDRICAL PIN Ø3x20 ISO 2338	
519	G001130	TILLER HEAD BUTTON SPRING	
520	G051923	TILLER HEAD DISPLAY PROTECTION PLATE	
521	G0P609	EMERGENCY BUTTON FOR TILLER '14	
522	G070410	PIPE CLAMP WITH RUBBER BAND DIAMETER 10, WIDTH 16, HOLE Ø8.5, MATERIAL W3	
526	S000050002	TILLER WIRING CX14 II Ed. EVO	

CX14 (II Ed.) AC EVO LI-ION S2 1150x525 - Machine code:
ED241M0P00

Spare Parts Catalogue CX14 (II Ed.) AC EVO LI-ION S2 1150x525 -
Revision: 0 (06/2019)



POSITION	PART NUMBER	DESCRIPTION	NOTES
600	G074481	DRIVE WHEEL AC 700W 24V ADIPR. WITH BEARING CX 14 II Ed.	
601	G073307	MOTOR WHEEL CASTING	
602	PLC91110	BEARING	
603	G073313	MOTOR WHEEL ADIPRENE RING L10 NEW	
604	PLC14310	SEALING	
605	G073009	BEARING	
606	PLC91534	O-RING 3725	
607	PLC00065	ROTOR	
608	PLC00066	FONIC WHEEL	
609	G073211	BEARING 6004 2RS C3 V2 P6	
610	PLC00067	FLANGE	
611	PLC00068	STATOR FIELD	
612	G073027	BEARING 6004 2Z	
613	PLC00070	FLANGE	
614	PLC00071	TIE ROD M5	
615	PLC00072	BASE	
616	PLC00073	SPEED SENSOR	
617	PLC00074	OR 3168	
618	PLC00075	SEALING	
619	PLC00076	SEALING RING	
620	G073242	SCREW WHEEL	
621	PLC90117	PROTECTION RING	
622	PLC13912	MOTOR WHEEL GASKET CX14	
623	PLC13716	BRAKE HOLDER PLATE CX14	
624	PLC00018	BRAKE	
625	G073011	MOTOR WHEEL GASKET	
628	PLC00079	FIFTH WHEEL	



POSITION	PART NUMBER	DESCRIPTION	NOTES
800	S000050005	WIRED PLATE CX14 II Ed. EVO Li-Ion	
801	G08656	WIRING BENT PLATE CX 14 II Ed.	
802	G08658	EMERGENCY SWITCH SUPPORT PLATE CX 14 II Ed. Li-Ion	
803	P4SD00027	CONTROLLER CURTIS AC F2-A - 24V 150A	
804	G079019	CONTACTOR ALBRIGHT SW80-65 24V CO	
810	S000050024	WIRED HORN CX14 II Ed.	
811	G075129	EMERGENCY SWITCH SCHALTBAU S100/80 24V	
812	G073924	SCHALTBAU RED BUTTON FOR G075129	