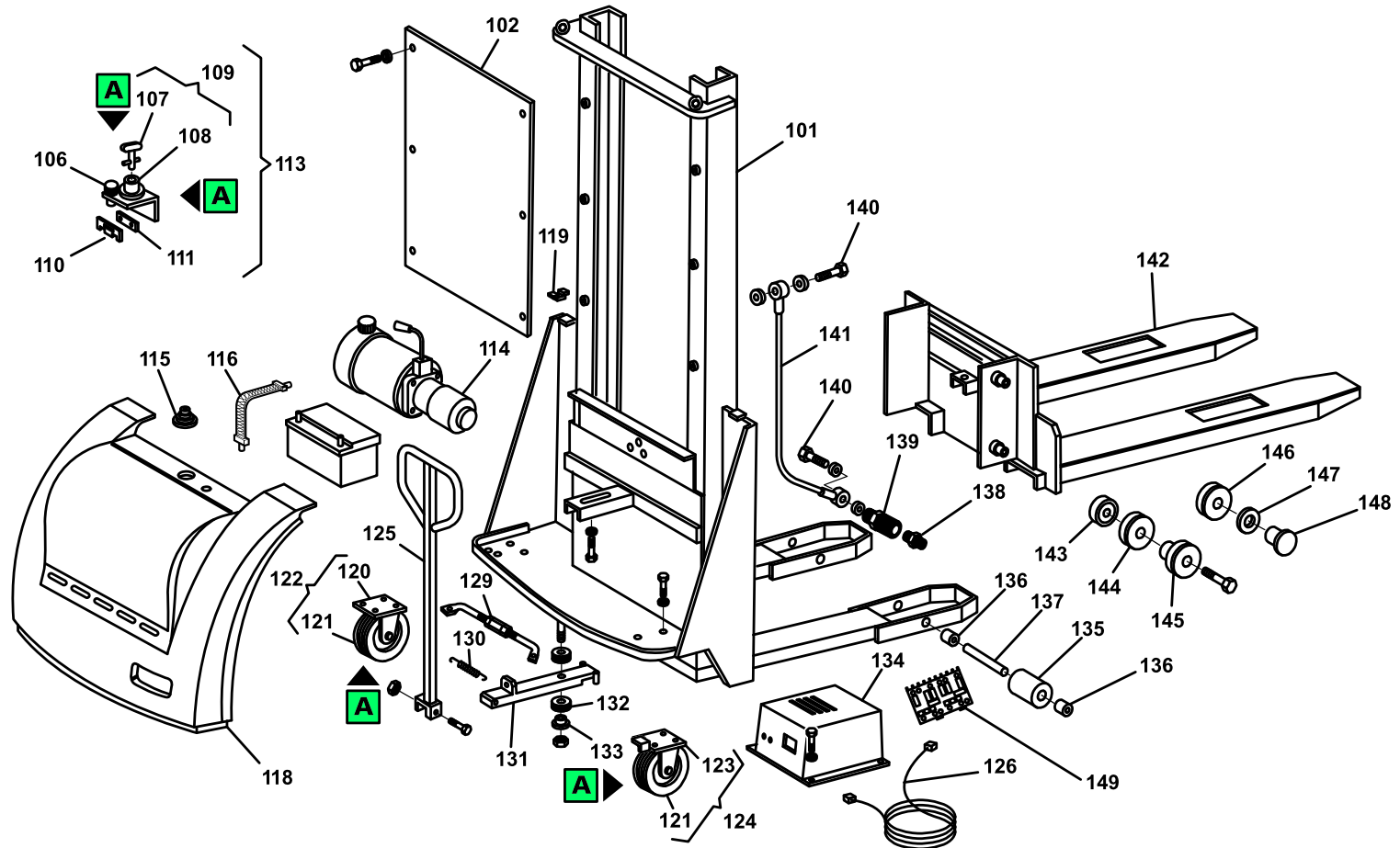


# Spare Parts Catalogue

## TX10-09

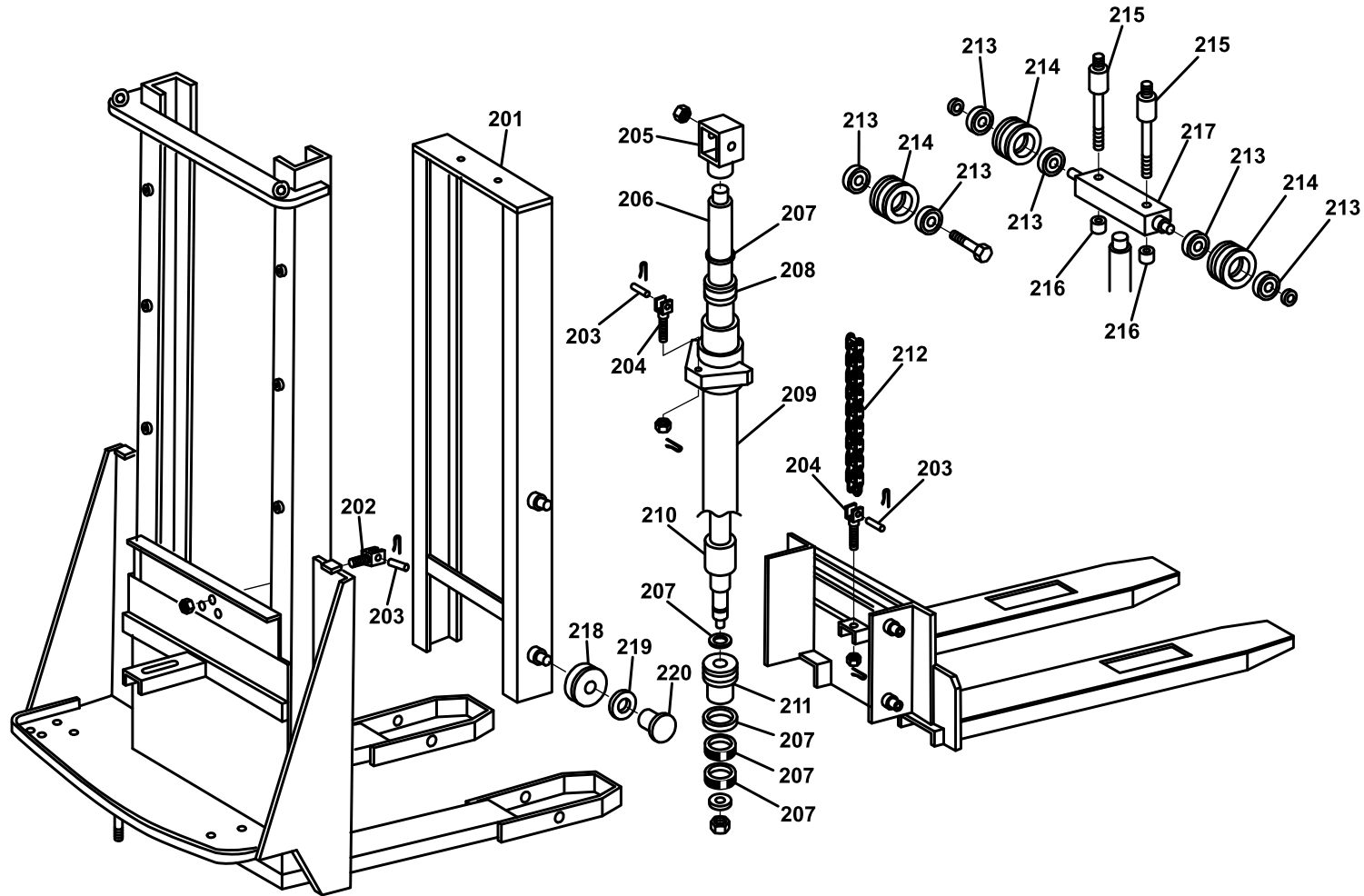
### Stackers

Valid for machine code: HA010000000  
Revision: 0 (06/2009)

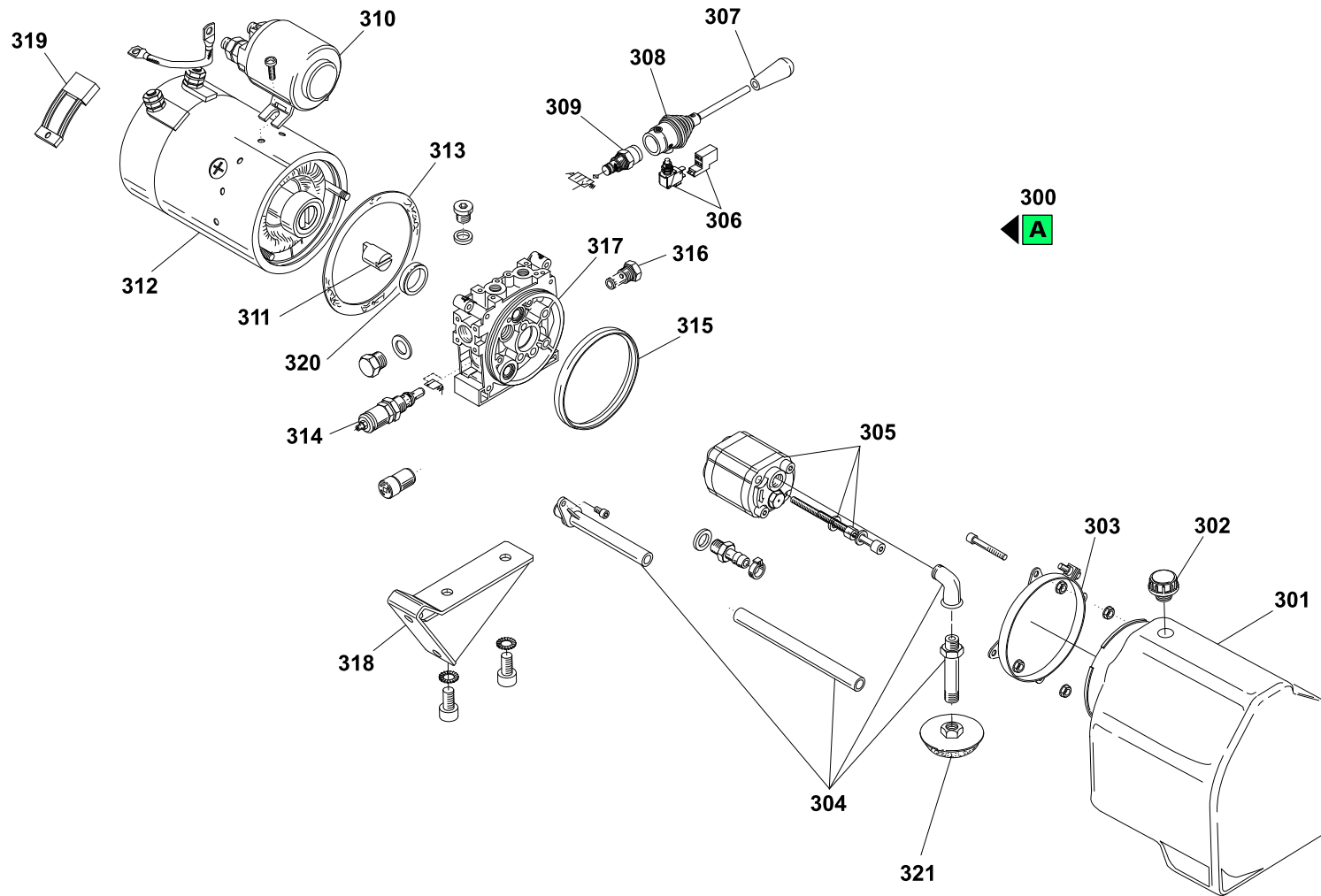


POSITION	PART NUMBER	DESCRIPTION	NOTES
101	V0201030119-PRAMAC	TELAIO TX 10/09 VERN.VERDE PRAMAC	
102	S0200038004	PLEXIGLASS GUARD TX-GX10/09 VERS.2	
106	G079693	MODULAR FUSEHOLDER + BLADE FUSE 7,5A	
107	G075220	KEY x BATTERY DISCONNECTING SWITCH	
109	G075102	BATTERY DISCONNECTING SWITCH 1 POLE	
110	G077540	FUSE 160A (RFM REGHEL)	
111	G070603	FUSE HOLDER x FUSE 160Amp	
113	S000036001	ELECTRIC WIRE TX ELETTRICO TX	
114	▲ G081028	HYDRAULIC POWER PACK '06 TX10	Attention: this item is valid for machines produced until 14/07/2008 Interchangeable: YES
114	▲ G081037	HYDRAULIC UNIT TX10 '08	Attention: this item is valid for machines produced from 14/07/2008 Interchangeable: YES
115	G052002	RUBBER BELLOWS (FOR STACKERS)(0-RAB/010)	
116	G000103	BATTERY ELASTIC WEBBING TX10	
117	G099300024	STARTER BATTERY 12 V - 70 Ah C/20 DIM. MAX 275x175x190	
118	▲ S0200018011	HOOD GUARD TX 10	Attention: this item is valid for machines produced until 14/09/2011 Interchangeable: NO
118	▲ S000035904	BONNET COVER TX 10 '11	Attention: this item is valid for machines produced from 14/09/2011 Interchangeable: NO
119	G034903	CAGE NUT M8 ZN	
120	G053402	SWIVELLING HEAVY STAND FOR WHEEL D200x50	
121	S0014010233	POLYURETHANE WHEEL /ALL D200x50 LAG + BEARINGS 6204	
121	S0002010169	Rubber Wheel D200 (model No. Ea200bh-65a Lifter)+bearing	
122	G053103	RUBBER WHEEL D200x50 HEAVY SUPPORT	
122	G053306	POLYURETHANE WHEEL C D200x50 HEAVY SUPPORT	
123	G053401	SWIVELLING HEAVY STAND FOR WHEEL D200x50 + BRAKE	
124	G053102	RUBBER WHEEL D200x50 HEAVY SUPPORT + BRAKE	
125	S0204020113	HANDLE PAINTED TX 10-12	
126	PTB00019	CABLE 3x0.75 IEC SK	
129	P0BR00001	HANDLE LINKAGE COMPLETE ARM TX10	
130	G001109	TRACTION SPRING P.49 HOOKS AT 90 DEGREES.	
131	S0202010056	HANDLE x TX10 PAINTED	
132	S0202010031	HANDLE BEARING TM	
133	S0204025010	LOWER LARGE WASHER TMC	
134	▲ G099300057	OPEN FRAME BATTERY CHARGER 15A-12V X TX 10	Attention: this item is valid for machines produced with serial number until LLI0035821 Interchangeable: YES
134	▲ S000035910	HIGH FREQUENCY BATTERY CHARGER S.P.E. 12-24V 10A TX10 SUPPORT + CABLE IEC-SCHUKO 2m	Attention: this item is valid for machines produced with serial number from LLI0035821 Interchangeable: YES

POSITION	PART NUMBER	DESCRIPTION	NOTES
135	S0202020029	NYLON ROLLER D82x70 + BEARINGS	
136	S0302016026	ROLLER SPACER SING.TX-GX (L.15) ZINC	
137	S0302015025	CLEVIS PIN TX/GX/LX "BURNISHED"	
138	G084103	MALE/MALE ADAPTATORS 3/8"	
139	G085003	FLOW CONTROL VALVE 3/8"	
140	G084001	SCREW PERFORATE (4 HOLES ) 3/8" L 29 -0,5/0 CH22	
141	G083002	TUBO EN853 2SN 3/8" L=880 OCCHIO 3/8" - OCCHIO 3/8" - H OCCHIO 17,5+/-0,2 FORO 3/8	
142	V000035007-9005	PAINTED COMPLETE FORK '06 TX10	
143	G010151	BEARING 6305 (25-62-17)	
144	S0207016006	SLIDING ROLL FORK TMC 10/16	
145	S0207018001	FORK ROLLER GUIDE GX/TX	
146	G019306	BEARING D70 (CSF.002)	
147	G019315	CONTRAST PLATE '01	
148	G019314	SIDE GUIDING SLIDER '01	
149	PTB00004	EL. BOARD FOR BATTERY CHARGER	

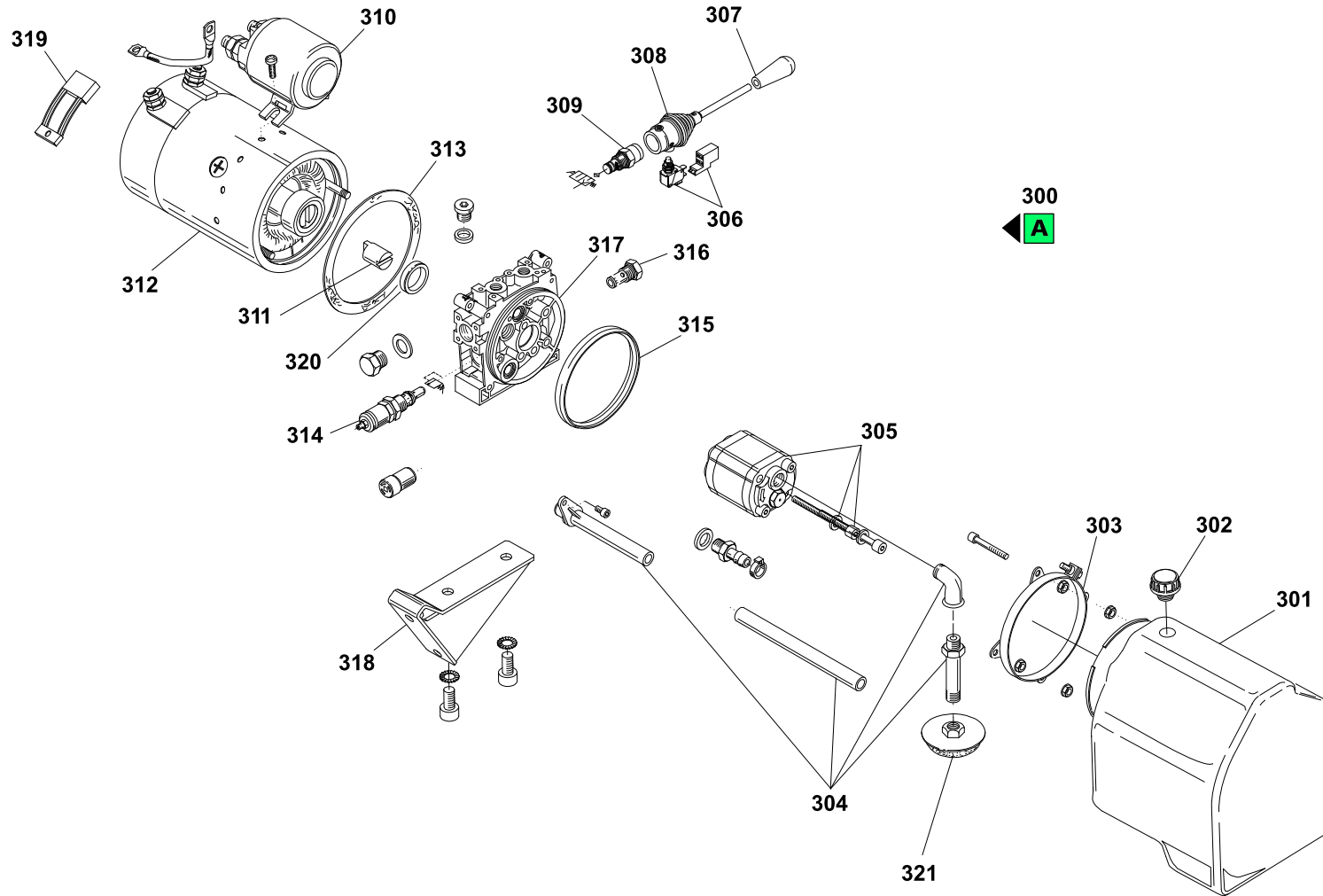


POSITION	PART NUMBER	DESCRIPTION	NOTES
203	G062104	FLAYER CHAIN PIN BL544 D6x29	
204	S0300185013	CHAIN HOLDER LX 12-14-16 ZINC PLATED	
205	S0306051022	CAST IRON PULLEY HOLDER TE-TM-L PAINTED	
206	S000035305	CYLINDER ROD TX-GX 10/09	
207	G090015	GASKET SET TMC16/20 G10-29	
208	S0206011001	CYLINDER BUSHING TMC 10/16-20	
209	S0206010062	COMPLETE CYLINDER TX-GX 10/09 PAINTED	
210	S0206016008	CYLINDER SPACER L.35 TE-TM	
211	S000035304	CYLINDER PISTON TX-GX 10/09-16-20	
212	G062016	FLAYER CHAIN STUB BL534-49P	
213	G010401	BEARING 6204 2RS (20-47-14)	
214	S0300158042	MACHINED PULLEY (CAST IRON) FOR STACKER 12Q SINGLE CHAIN	
216	S0306015036	FREE LIFT PIN SPACER TE-TM	
217	S0306012072	DOUBLE PULLEY HOLDER L16 PAINTED "1998"	
218	G019306	BEARING D70 (CSF.002)	
219	G019315	CONTRAST PLATE '01	
220	G019314	SIDE GUIDING SLIDER '01	
221	S0306055043	CAST IRON PULLEY PIN HOLDER BURNISHED	
222	G010403	BEARING 6005 2RS (25-47-12)	



POSITION	PART NUMBER	DESCRIPTION	NOTES
300	G081028	HYDRAULIC POWER PACK '06 TX10	
301	PCY61214500	RESERVOIR BOTTLE	
302	PCY49154500	OIL CAP TANK TX HYDR-APP	
303	PCY25004800	BAND FOR HYDRAULIC UNIT H	
304	PCY12002	KIT TUBI TX HYDR-APP	
305	PCY17050067	KIT POMPA "F" PHC 1-1,7 cm3/g DX+V	
306	PCY46109900	MICROSWITCH	
307	PCY49104600	POMELLO CENTRALINA HYDR-APP	
308	PCY25005800	HYDRAULIC POWER PACK COMPLETE LEVER	
309	PCY20023000	VALVOLA TX10/12	
310	G082180	RELAY 12V. 80 AH	
311	PCY60410600	GIUNTO A PENNA PER "MC" CON MOTORE ELETTRICO 2.05-2.2Kw E POMPE Gr.1	
312	PCY24011500	ENGINE 12V FOR TX10 CONTROL UNIT	
313	PCY61200100	GASKET FOR HYDRAULIC UNIT H	
314	PCY21000001	VALVOLA MAX 50-210 BAR	
315	PCY61212400	HYDRAULIC UNIT O-RING HX	
316	PCY20020400	HYDRAULIC UNIT RETENTION VALVE HX	
317	PCY71013005	CENTRAL FLANGE	
318	PCY17010067	FIXING TX	
319	PCY00004056	BRUSH KIT GX/10/12 TX12	
320	PCY60507900	SPACER FOR HYDRAULIC UNIT H	
321	PCY49122100	FILTER	





POSITION	PART NUMBER	DESCRIPTION	NOTES
300	G081037	HYDRAULIC UNIT TX10 '08	
301	PCY61214500	RESERVOIR BOTTLE	
302	PCY49154500	OIL CAP TANK TX HYDR-APP	
303	PCY25004800	BAND FOR HYDRAULIC UNIT H	
304	PCY12002	KIT TUBI TX HYDR-APP	
305	PCY00035	POMPA CENTRALINA	
306	PCY46109900	MICROSWITCH	
307	PCY49104600	POMELLO CENTRALINA HYDR-APP	
308	PCY25005800	HYDRAULIC POWER PACK COMPLETE LEVER	
309	PCY20023000	VALVOLA TX10/12	
310	G082180	RELAY 12V. 80 AH	
311	PCY60410600	GIUNTO A PENNA PER "MC" CON MOTORE ELETTRICO 2.05-2.2Kw E POMPE Gr.1	
312	PCY24011500	ENGINE 12V FOR TX10 CONTROL UNIT	
313	PCY61200100	GASKET FOR HYDRAULIC UNIT H	
314	PCY21000001	VALVOLA MAX 50-210 BAR	
315	PCY61212400	HYDRAULIC UNIT O-RING HX	
316	PCY20020400	HYDRAULIC UNIT RETENTION VALVE HX	
317	PCY71013005	CENTRAL FLANGE	
318	PCY17010067	FIXING TX	
319	PCY00004056	BRUSH KIT GX/10/12 TX12	
320	PCY60507900	SPACER FOR HYDRAULIC UNIT H	
321	PCY49122100	FILTER	