

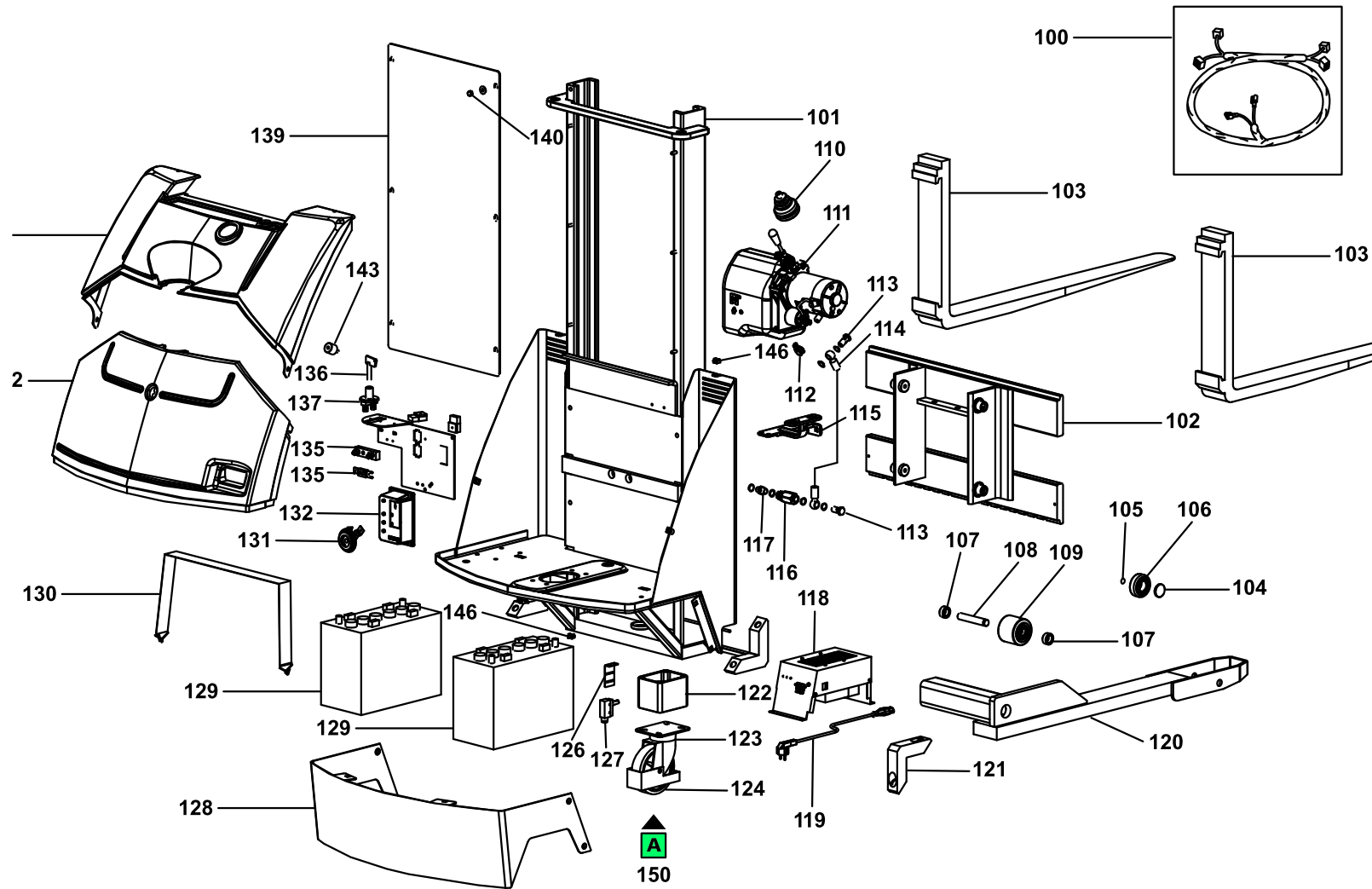
Spare Parts Catalogue

GX12-35-II EDITION-STRADDLE

Stackers

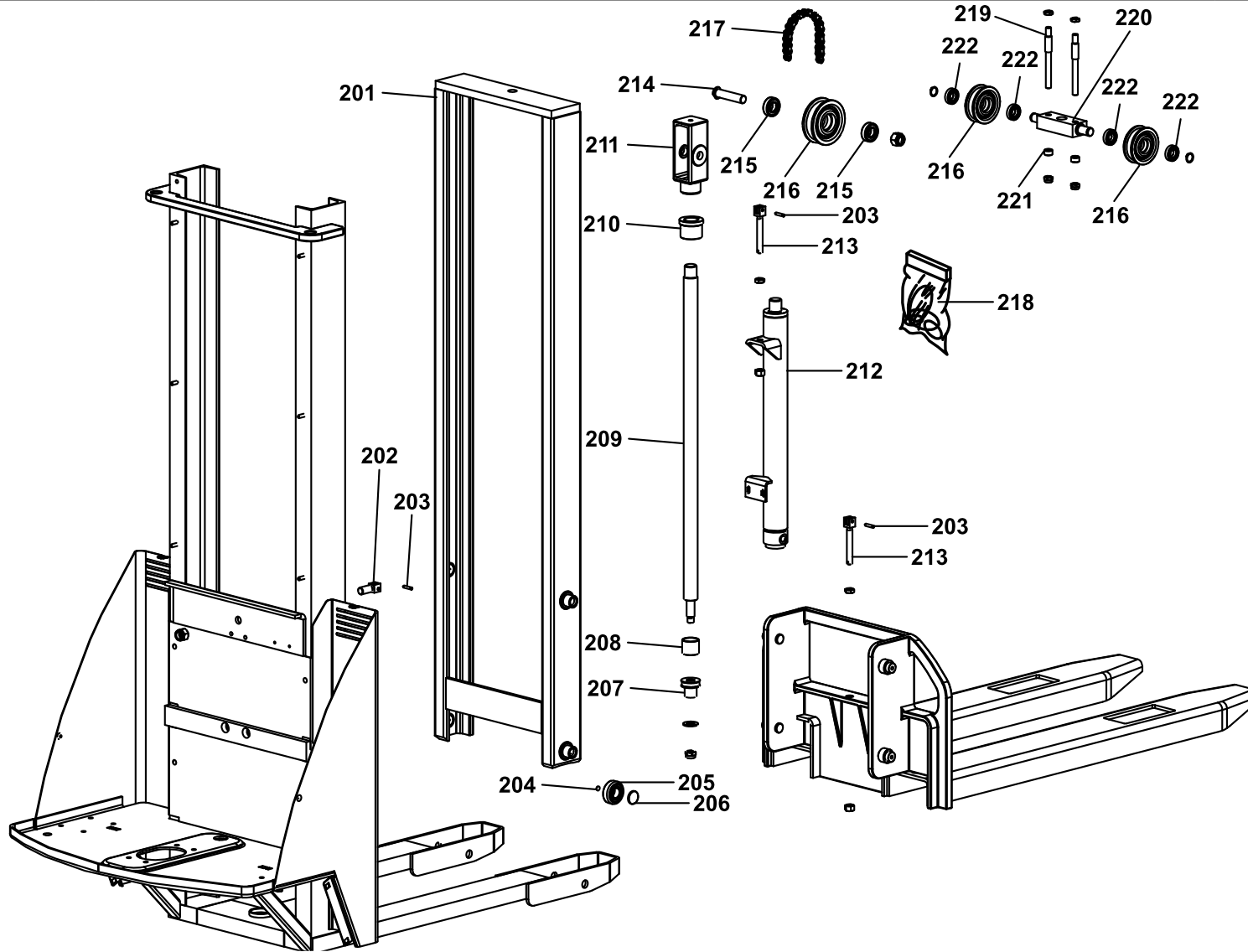
Valid for machine code: HG712010000

Revision: 0 (05/2016)

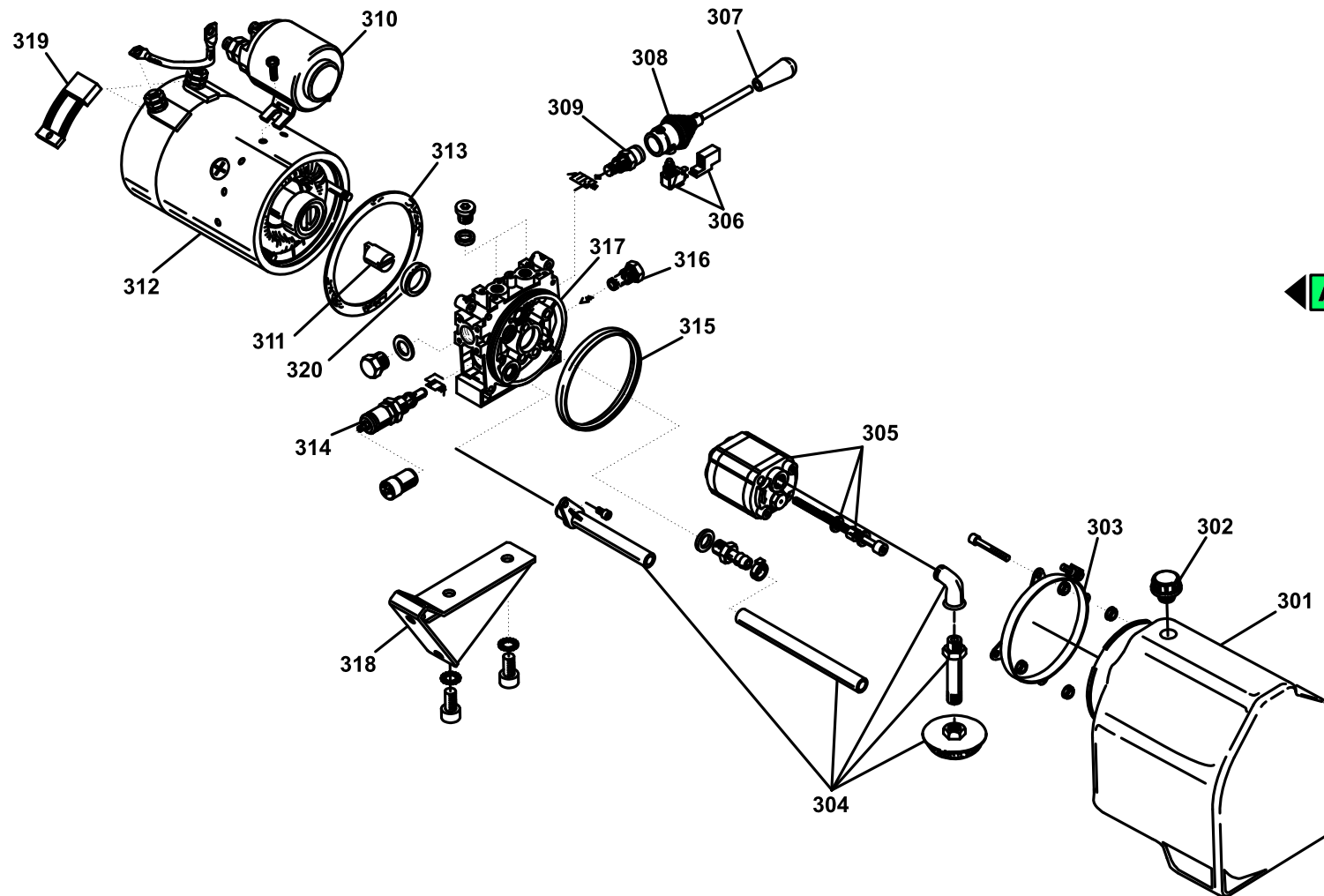


POSITION	PART NUMBER	DESCRIPTION	NOTES
100	P0CD00012	Complete Kit electric wiring cables '05 GX 10 UP-LOK terminal	
101	V000048009-PRAMAC	PAINTED FRAME '06 GX12/35 STRADDLE	
102	V0317080070-9005	FORCA COMPLETA VERNICIATA GX 12/25-38 TX 12/33 STRADDLE	
103	G001901	FEM FORK CLASS 2A 100x35 LENGHT=1000	
104	G019314	SIDE GUIDING SLIDER '01	
105	G019315	CONTRAST PLATE '01	
106	G019306	BEARING D70 (CSF.002)	
107	S0302016026	ROLLER SPACER SING.TX-GX (L.15) ZINC	
108	S0302015025	CLEVIS PIN TX/GX/LX "BURNISHED"	
109	S0302020117	POLYURETHANE ROLLER D82x70 + BEARING	
110	G052002	RUBBER BELLOWS (FOR STACKERS)(0-RAB/010)	
111	G081035	HYDRAULIC UNIT TX12-GX10/12 '06	
112	G070407	TUBE HOLDER COLLAR DIAMETER 16, WIDTH 16, HOLE Ø8.5, MATERIAL W3	
113	G084001	SCREW PERFORATE (4 HOLES) 3/8" L 29 -0,5/0 CH22	
114	G083002	TUBO EN853 2SN 3/8" L=880 OCCHIO 3/8" - OCCHIO 3/8" - H OCCHIO 17,5+/-0,2 FORO 3/8	
115	V01944-9005	PAINTED DRIVE WHEEL SUPPORT ARM '11 GX	
116	G085003	FLOW CONTROL VALVE 3/8"	
117	G084103	MALE/MALE ADAPTATORS 3/8"	
118	S000045930	HIGH FREQUENCY BATTERY CHARGER 12-24V 11,5A BRACKET GX/TX12 + CABLE IEC-SCHUKO 2m	
119	PTB00019	CABLE 3x0.75 IECSK	
120	V0311080067-PRAMAC	LEFT LEG STRADDLE EUROPE PAINTED	
120	V0311080068-PRAMAC	PAINTED ADJUSTABLE LEG RIGHT STRADDLE EUROPE	
121	V0201082011-PRAMAC	MORSETTO MOB. STRADDLE VER. VERDE PRAMAC	
122	V01941-9005	PAINTED WHEEL SPACER '06 GX	
123	G053412	WHEEL SUPPORT 150-160/50 h.m.120 mm.40	
124	G053334	POLYURETHANE/ALUMINIUM WHEEL T8017CC NEW x G10-TE	
126	G09640	SECOND SPEED MICRO BRACKET '06 GX	
127	G075006	LIMIT SWITCH WITH ROLLER PIZZATO MKV11D15	
128	S0313010039	MOTOR WHEEL PROTECTION GX10 PAINTED	
129	G099300006	STARTER BATTERY 12 V - 85 Ah C/20 DIM. MAX 353x175x190	
130	G000112	BATTERY ELASTIC WEBBING GX10/12	
131	G075110	HORN 24V DC	
132	G076091	PRAMAC CONTROLLER PMD24150/PR1-150A 24V '06 GX	
133	G077540	FUSE 160A (RFM REGHEL)	
134	G070603	FUSE HOLDER x FUSE 160Amp	
135	G079693	MODULAR FUSEHOLDER + BLADE FUSE 7,5A	

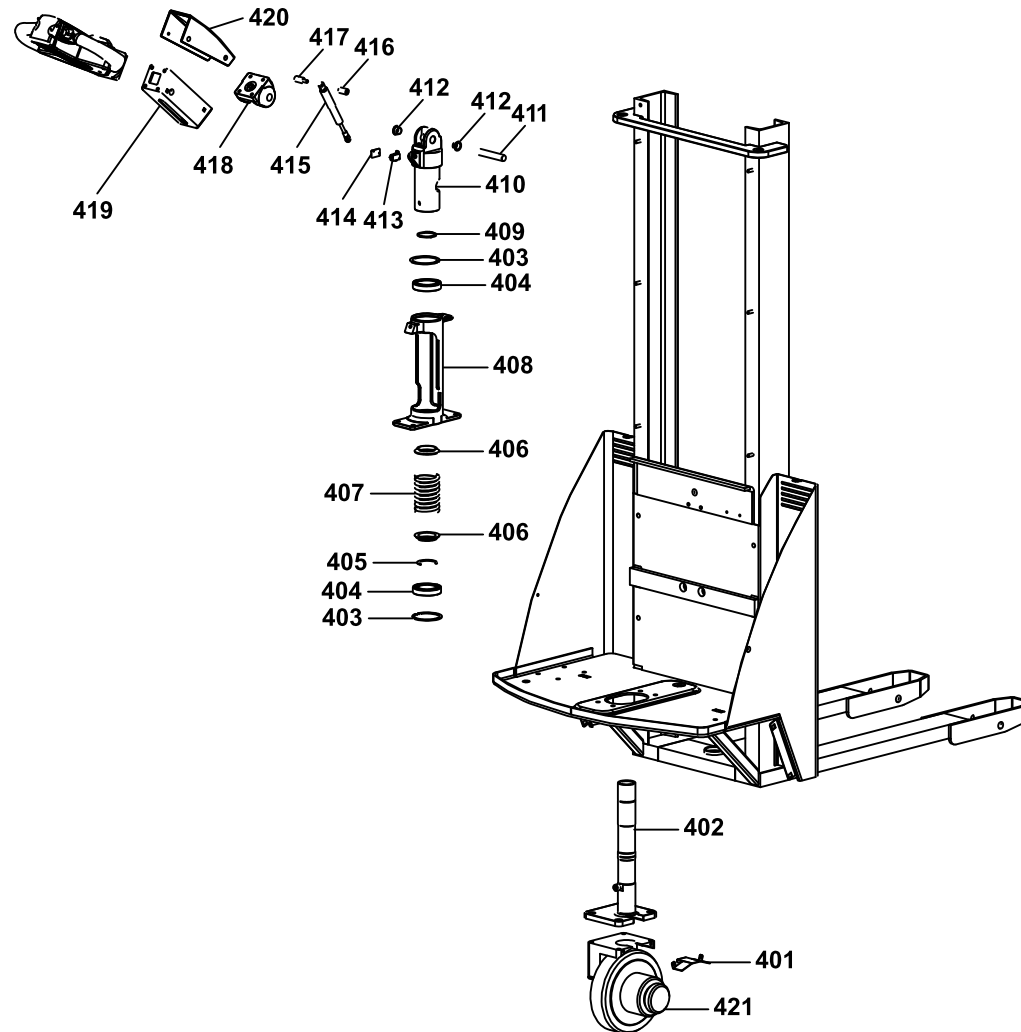
POSITION	PART NUMBER	DESCRIPTION	NOTES
136	G075220	KEY x BATTERY DISCONNECTING SWITCH	
137	G075102	BATTERY DISCONNECTING SWITCH 1 POLE	
138	G075102	BATTERY DISCONNECTING SWITCH 1 POLE	
139	S0310018006	PLEXIGLASS GUARD TX10/20-16 TX12/29-35 GX12/29-35-38 GX10/16 FX12/29-35-38 G10 VERS.2	
140	G035001	BLIND NUT NYLON BLACK M8	
141	S000044902	UPPER BONNET COVER '06 GX	
142	S000044909	BOTTOM SIDE BONNET COVER GX '11	
143	S000045505	UPPER BONNET COVER SPACER '06 GX	
144	S0310018010	HOOD GUARD GX 10-12	
150	G053328	WHEEL POLY.C T150x40/49 C	



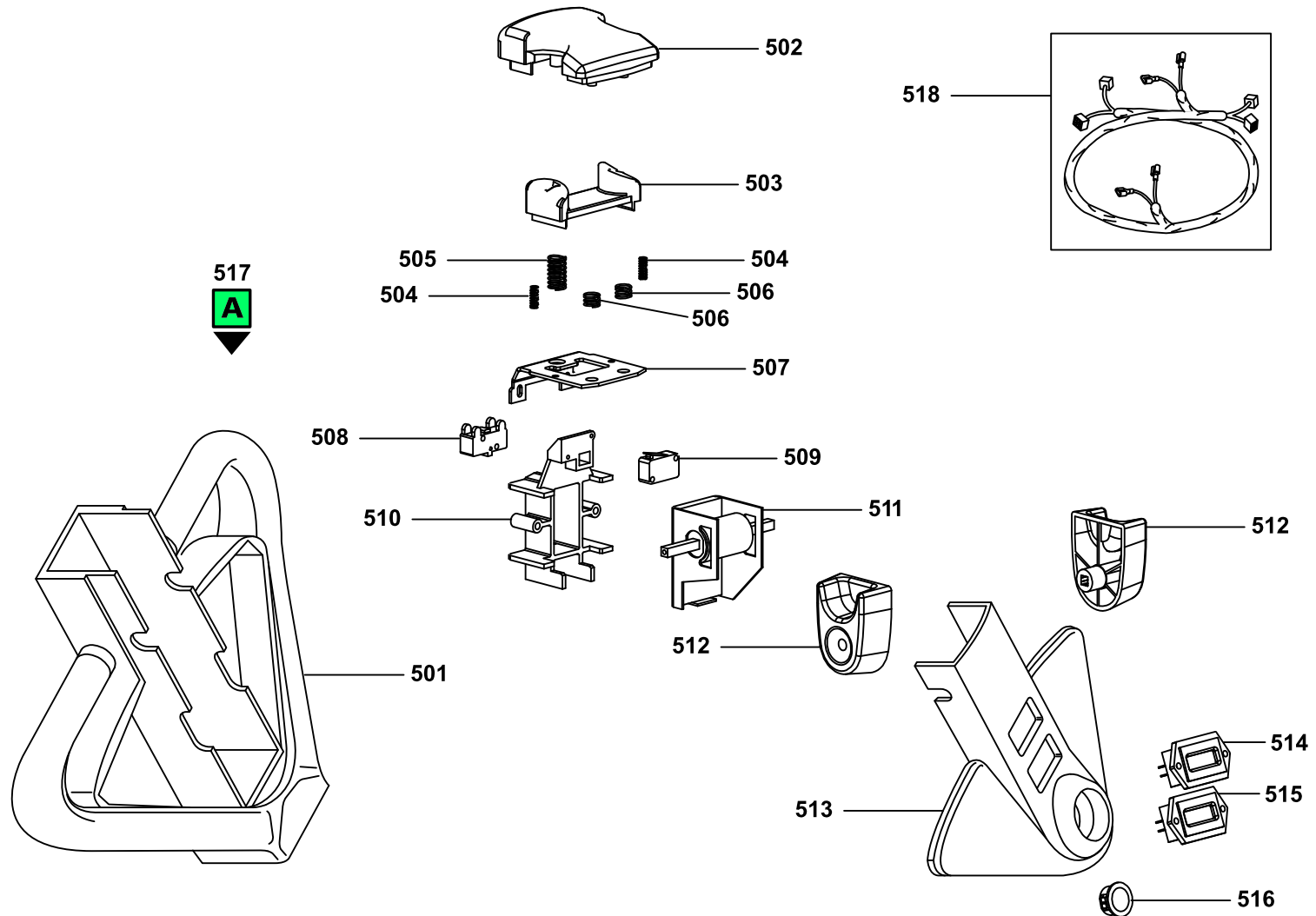
POSITION	PART NUMBER	DESCRIPTION	NOTES
201	V0305010286-9005	SECOND STAGE TX-GX 12/35 PAINTED	
203	G062104	FLAYER CHAIN PIN BL544 D6x29	
204	G019315	CONTRAST PLATE '01	
205	G019306	BEARING D70 (CSF.002)	
206	G019314	SIDE GUIDING SLIDER '01	
207	S000045400	CYLINDER PISTON '06 FX-GX-TX12/35	
208	S000045607	CYLINDER SPACER '06 FX-GX-TX12/35-38	
209	S000045302	CYLINDER ROD '06 FX-GX-TX12/35	
210	S000045401	CYLINDER NUT '06 FX-GX-TX12/35	
212	S000045035	COMPLETE CYLINDER '06 FX-GX-TX12/35	
213	S0300185013	CHAIN HOLDER LX 12-14-16 ZINC PLATED	
215	G010401	BEARING 6204 2RS (20-47-14)	
216	S0300158042	MACHINED PULLEY (CAST IRON) FOR STACKER 12Q SINGLE CHAIN	
217	G062019	FLAYER CHAIN STUB BL534-131P	
218	GP90037	COMPLETE CYLINDER GASKET SET '06 FX-GX-TX12 NEW	
219	S0306015052	FREE LIFT PIN L10-L16	
220	S0306012072	DOUBLE PULLEY HOLDER L16 PAINTED "1998"	
221	S0306015036	FREE LIFT PIN SPACER TE-TM	
222	G010403	BEARING 6005 2RS (25-47-12)	



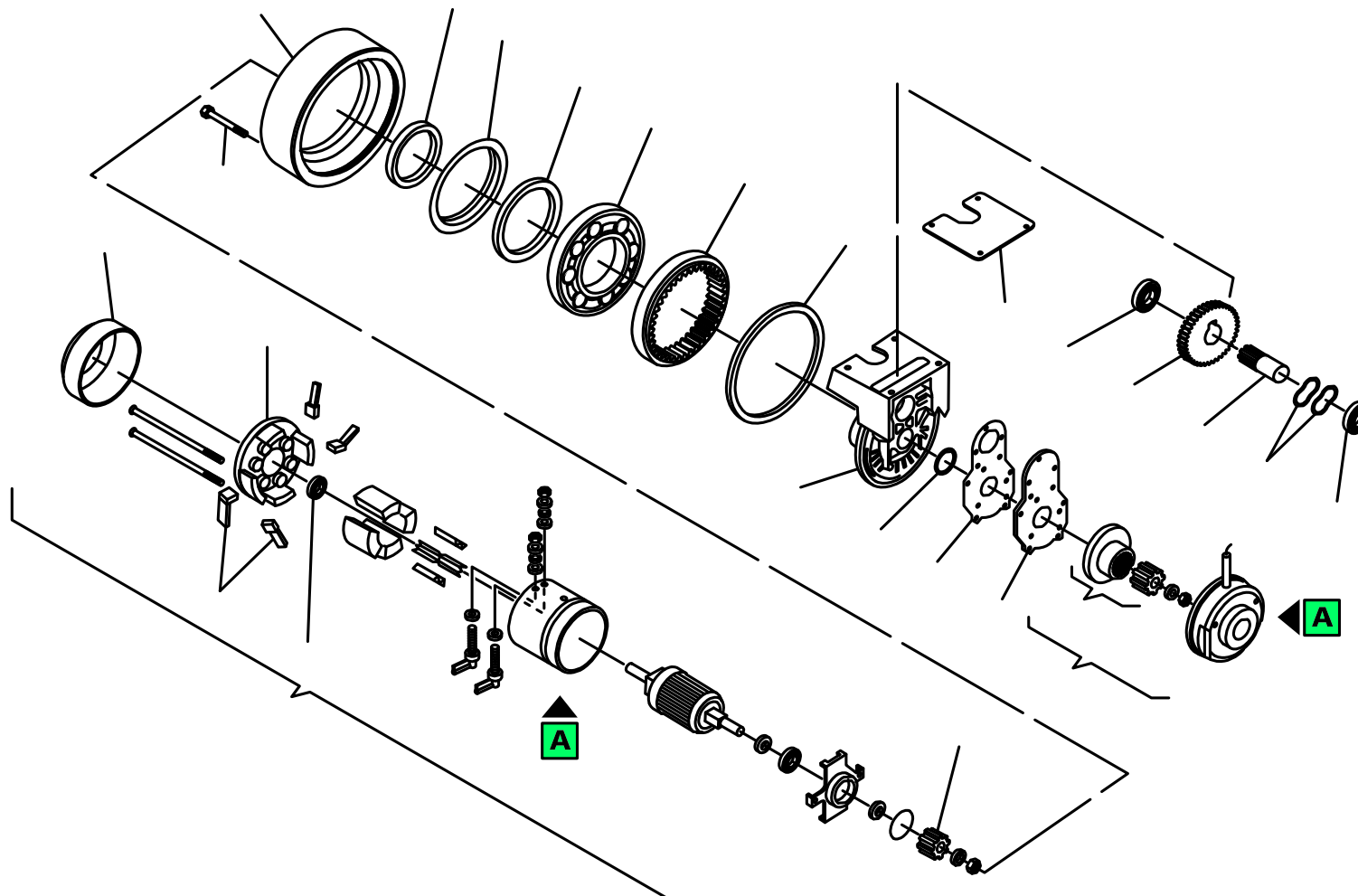
POSITION	PART NUMBER	DESCRIPTION	NOTES
301	PCY61214500	RESERVOIR BOTTLE	
302	PCY49154500	OIL CAP TANK TX HYDR-APP	
303	PCY25004800	BAND FOR HYDRAULIC UNIT H	
304	PCY12002	KIT TUBI TX HYDR-APP	
305	PCY00035	POMPA CENTRALINA	
306	PCY46109900	MICROSWITCH	
307	PCY49104600	POMELLO CENTRALINA HYDR-APP	
308	PCY25005800	HYDRAULIC POWER PACK COMPLETE LEVER	
309	PCY20023000	VALVOLA TX10/12	
310	G082127	COMPLETE RELAY 24V C.C. P.C-E-F-G (EF.)	
311	PCY60410600	GIUNTO A PENNA PER "MC" CON MOTORE ELETTRICO 2.05-2.2Kw E POMPE Gr.1	
312	PCY24011800	ELECTR. MOTOR "FU" 24Vcc 2,2kW S-T - MFT	
313	PCY61200100	GASKET FOR HYDRAULIC UNIT H	
314	PCY21000001	VALVOLA MAX 50-210 BAR	
315	PCY61212400	HYDRAULIC UNIT O-RING HX	
316	PCY20020400	HYDRAULIC UNIT RETENTION VALVE HX	
317	PCY71013005	CENTRAL FLANGE	
318	PCY17010067	FIXING TX	
319	PCY00008001	BRUSH KIT	
320	PCY60507900	SPACER FOR HYDRAULIC UNIT H	
321	PCY49122100	FILTER	
999	G081035	HYDRAULIC UNIT TX12-GX10/12 '06	



POSITION	PART NUMBER	DESCRIPTION	NOTES
401	S0303010153	MOTOR WHEEL WIRING BRACKET L10-L16	
402	▲ S000045102	MACHINED DRIVE WHEEL SHAFT '06 GX12	Attention: this item is valid for machines produced until 26/03/2012 Interchangeable: YES
402	▲ S000045105	WELDED DRIVE WHEEL SUPPORT GX12 '11	Attention: this item is valid for machines produced from 26/03/2012 Interchangeable: YES
403	G042280	INNER SEEGER 7436 I 80	
404	G010214	BEARING 6010 2RS(50-80-16)	
405	G042300	CRESCENT RING N1800-200	
406	S000044600	SPRING RING '06 GX	
407	G001152	DRIVE WHEEL SPRING '06 GX12	
408	S000044103	MACHINED DRIVE WHEEL SUPPORT '06 GX	
409	G042150	OUTER SEEGER 7435 E 50	
410	V000044105-9005	PAINTED TILLER SUPPORT '06 GX	
411	S000025501	TILLER PIN GX-LX '03 BURNISHED	
412	G016307	BOCCOLA FLANGIATA DU 18-20	
413	G075004	MICROSWITCH FOR TOW BAR L10	
414	G09416	TILLER SWITCH PROTECTION PLATE GX-LX '03	
415	G001728	GAS SPRING GX AMA R20 Z10 LTA 255 mm 170 N	
416	S000025503	TILLER SPACER GX-LX '03	
417	S000025502	BURNISHED TILLER SCREW-NUT SPACER GX-LX '03	
418	V000044102-9005O	TILLER BRACKET GX-LX '03 PAINTED	
419	V09415-9005	TILLER BOX GX-LX '03 PAINTED	
420	S000025901	COPERCHIO TIMONE GX-LX '03	
421	G074431	MOTOR WHEEL 700W 24V PERMANENT MAGNET x CX14	



POSITION	PART NUMBER	DESCRIPTION	NOTES
501	S0304178044	COATED HANDLE '00 (POLY)	
502	S0304178033	HANDLE EMERGENCY '00	
503	S0304178032	HANDLE HORN ROCKER SWITCH '00	
504	G001131	SPRING De5,6 F0,5 - 10 TURNS L20 ZINC PLATED	
505	G001134	SPRING De12,3 F1 - 9 TURNS - L=24 ZINC PLATED	
506	G001132	SPRING De11 WIRE 1 - 4 TURNS L10 MOL/ZN	
507	G07330	HANDLE EMERGENCY SUPPORT PLATE '00	
508	G075016	MICROSWITCH 5A 250V	
509	G075017	MICROSWITCH XG52-J21	
510	S0304178034	HANDLE POTENTIOMETER SUPPORT '00	
511	G077007	ELECTRONIC THROTTLE GPH/HT3 x GX10 WIRED	
512	S0304178031	HANDLE BUTTERFLY '00	
513	S0314108031	HANDLE COVER '00 GX STACKERS SERIES	
514	G079018	HOUR METER CURTIS	
515	G079005	BATTERY LEVEL GAUGE CURTIS	
516	G051102	CAP FOR HOLE D20.6	
517	S000044010	COMPLETE TILLER '05 GX 10	
518	POCD00015	ELECTRIC WIRING GX10/12 EDITION II	



POSITION	PART NUMBER	DESCRIPTION	NOTES
601	G073242	SCREW WHEEL	
602	PLC13268S	ANELLO MOTORUOTA VULK. SCOLPITO TE/GX12/CX14	
602	G073243	MOTOR WHEEL RUBBER RING TE96/CX14/GX12	
602	G073331	MOTOR WHEEL ADIPRENE RING TE96/CX14/GX12	
602	G073330	MOTORWHEEL RUBBER RING ECO. 250x76 13270	
602	PLC13265S	RUBBER RING GX12-CX14-TE	
603	G073006	MOTOR WHEEL RING	
604	G073302	PROTECTION RING	
605	G073007	MOTOR WHEEL GASKET	
606	G073009	BEARING	
607	G073260	PINION +CROWN WHEEL	
608	G073245	MOTOR WHEEL GASKET	
609	G073246	MOTOR WHEEL CASTING	
610	G073011	MOTOR WHEEL GASKET	
611	G073247	BEARING	
612	G073026	BEARING 16006	
613	G073029	PINION + DRIVER WHEEL	
614	G073030	COMPENSATION RING	
615	PLC90117	PROTECTION RING	
616	PLC13912	MOTOR WHEEL GASKET CX14	
617	PLC13716	BRAKE HOLDER PLATE CX14	
618	G073066	BRAKE LINING +HUB	
619	G073036	ELECTRIC BRAKE K1 HOLE CIMA 24V	
620	PLC35105	MOTOR FAN PROTECTION CX14	
621	G073019	SLIP SUPPORT	
622	G073068	BRUSHES KIT MOTOR 24V	
623	G073249	SLIP BEARING 6201 2RSRC3	
624	PLC30294	CX 14 DRIVE MOTOR	