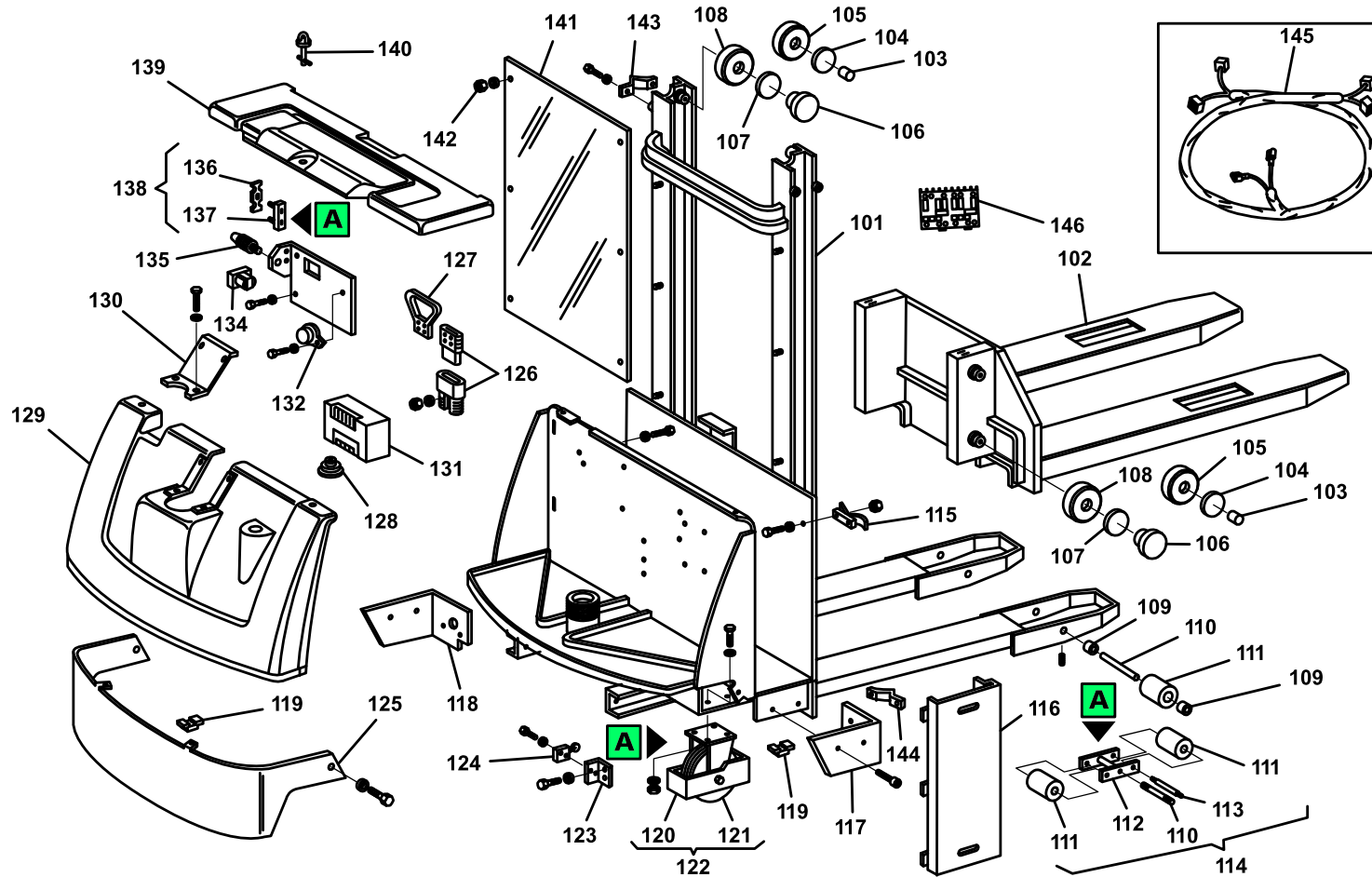


Spare Parts Catalogue

LX12-16

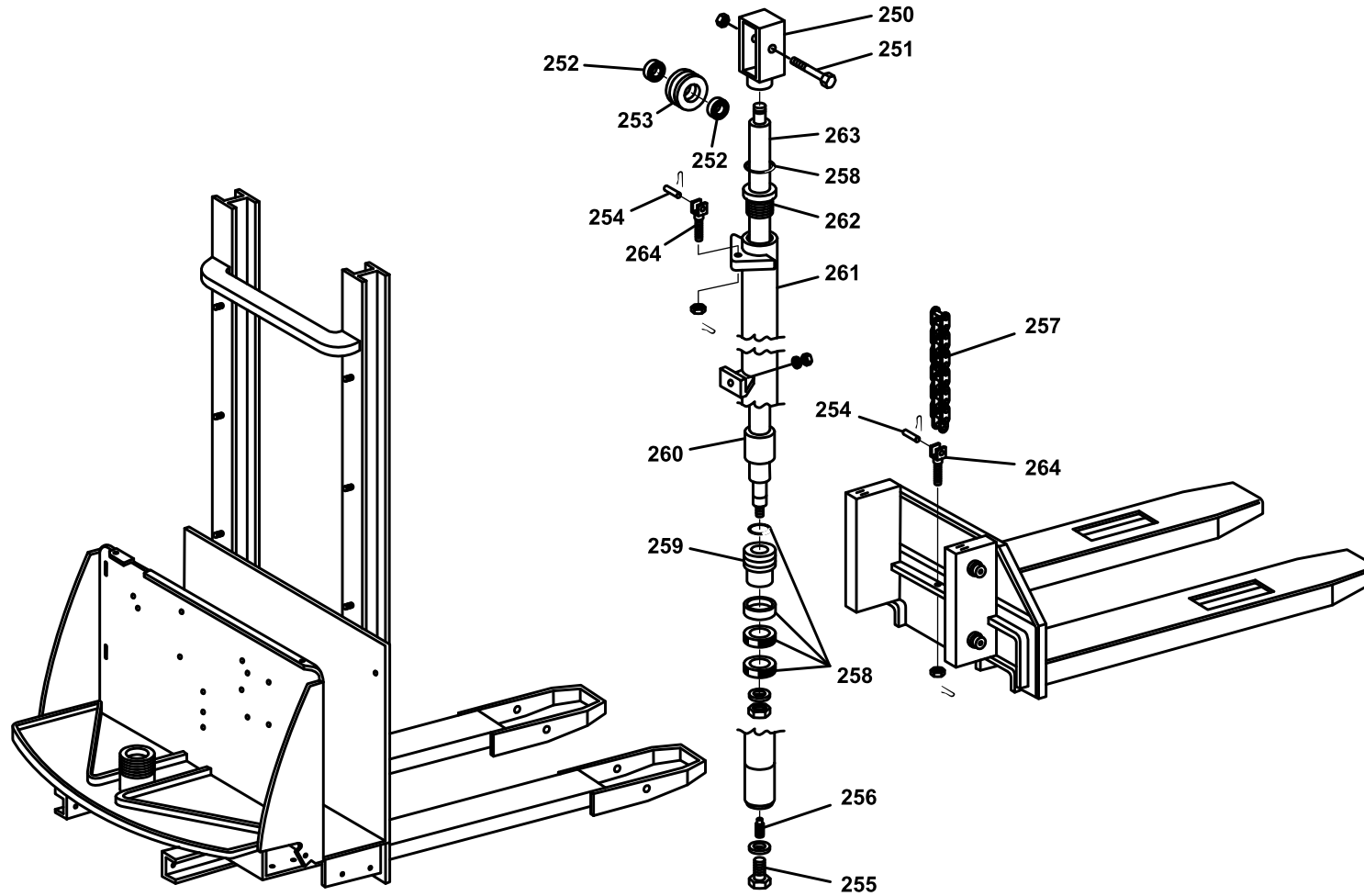
Stackers

Valid for machine code: HD312000000
Revision: 0 (10/2006)

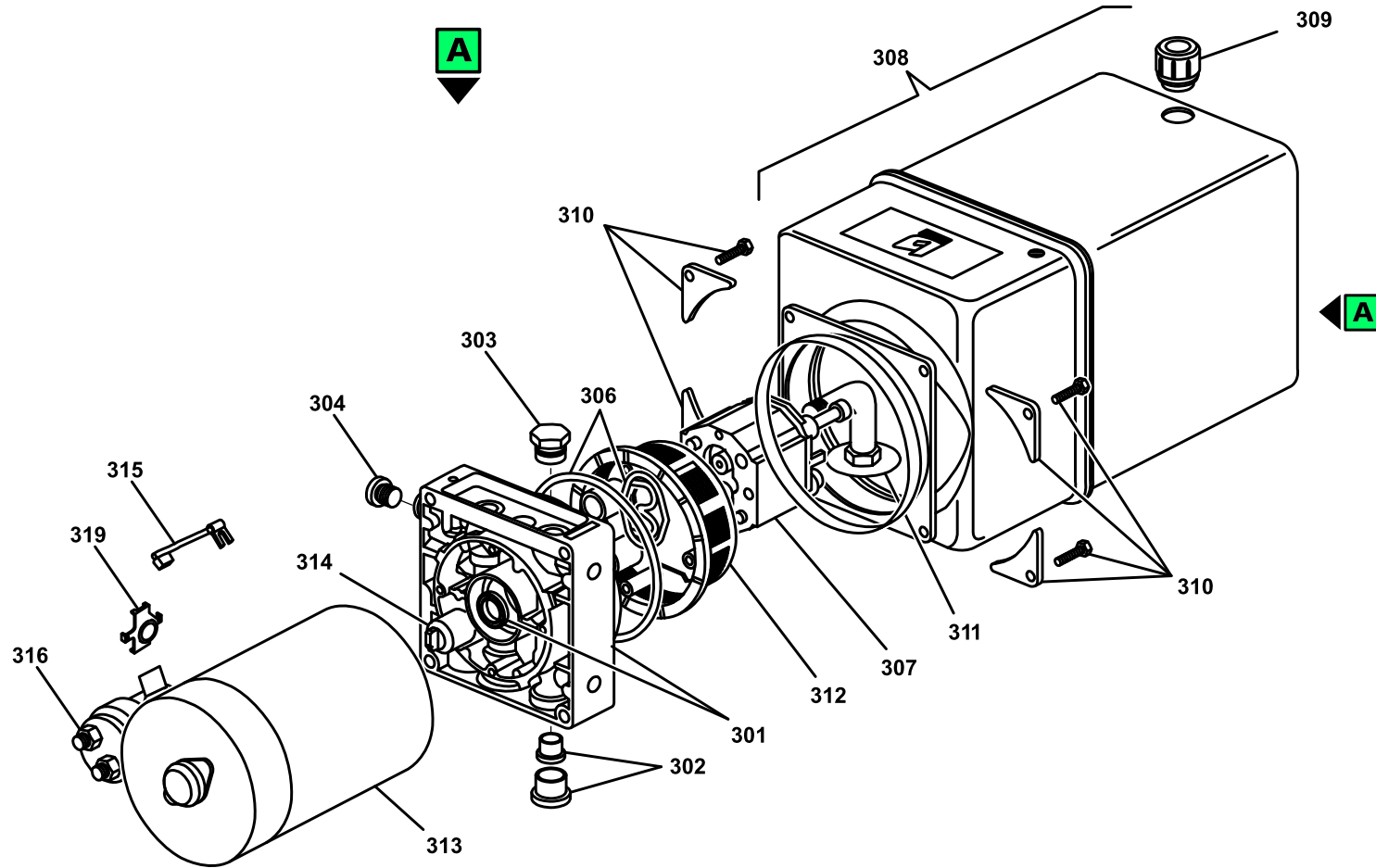


POSITION	PART NUMBER	DESCRIPTION	NOTES
101	V0301170314-PRAMAC	TELAIO LX 12/16 VERN.VERDE PRAMAC	
102	S0307170317	FORK LX 12/16 PAINTED	
103	G019304	ADJUSTABLE NYLON PAD FOR G019104	
104	G019305	ADJUSTABLE PAD DISC FOR G019104	
105	G019301	CYL. ROLLER BEARING D77.7 xG019104	
106	G019314 + G019315	DESCRIPTION N/A	
107	G019315	CONTRAST PLATE '01	
108	G019306	BEARING D70 (CSF.002)	
109	S0302016026	ROLLER SPACER SING.TX-GX (L.15) ZINC	
110	S0302015025	CLEVIS PIN TX/GX/LX "BURNISHED"	
111	S0302020117	POLYURETHANE ROLLER D82x70 + BEARING	
113	S0302015026	TANDEM PIN TE/TM/L10 (BURNISHED)	
114	S0302010006	COMPLETE ROLLER TANDEM POLYURETHANE L16 - LVT	
115	G040010	LEVER HINGE ZINC PLATED WHITE	
116	V09349-PRAMAC	BATTERY COMPARTMENT SIDE PANEL LX12-16	
117	S0300177021	RIGHT SIDE PROTECTION LX 12-16 PAINTED	
118	S0300177020	LEFT SIDE PROTECTION LX 12-16 PAINTED	
119	G034903	CAGE NUT M8 ZN	
120	G018001	COMPLETE CASTOR WHEEL LX + PROTECTION	
121	G053345	POLYURETHANE/CAST IRON WHEEL Z125x50/50(S501183)	
122	G053335	POLYURETHANE/CAST IRON WHEEL Z125x50/50 C/C BOMB.	
123	G09353	SECOND SPEED MICROSWITCH SUPPORT LX12-16	
124	G075006	LIMIT SWITCH WITH ROLLER PIZZATO MKV11D15	
125	S0300179013	MOTOR WHEEL PROTECTION LX 12-16 PAINTED	
126	G071099	CONNECTOR 160A	
127	G071203	HANDLE AB 995 G3 (ANDERSON)	
128	G052002	RUBBER BELLOWS (FOR STACKERS)(0-RAB/010)	
129	S0300178046	HOOD LX	
130	V09348-PRAMAC	CLOSING CARTER COFANO LX12-16 GREEN PRAMAC	
131	▲ G076028	New code G076000	Attention: this item is valid for machines produced until 17/06/2008 Interchangeable: YES
131	▲ G076000	CONTROLLER 1243-4224 (24V-200A) '08	Attention: this item is valid for machines produced from 17/06/2008 Interchangeable: YES
132	G075110	HORN 24V DC	
134	G079019	CONTACTOR ALBRIGHT SW80-65 24V CO	
135	▲ G070625	FUSE HOLDER SCREW CAP + FUSE 6.3A	Attention: this item is valid for machines produced Interchangeable: YES

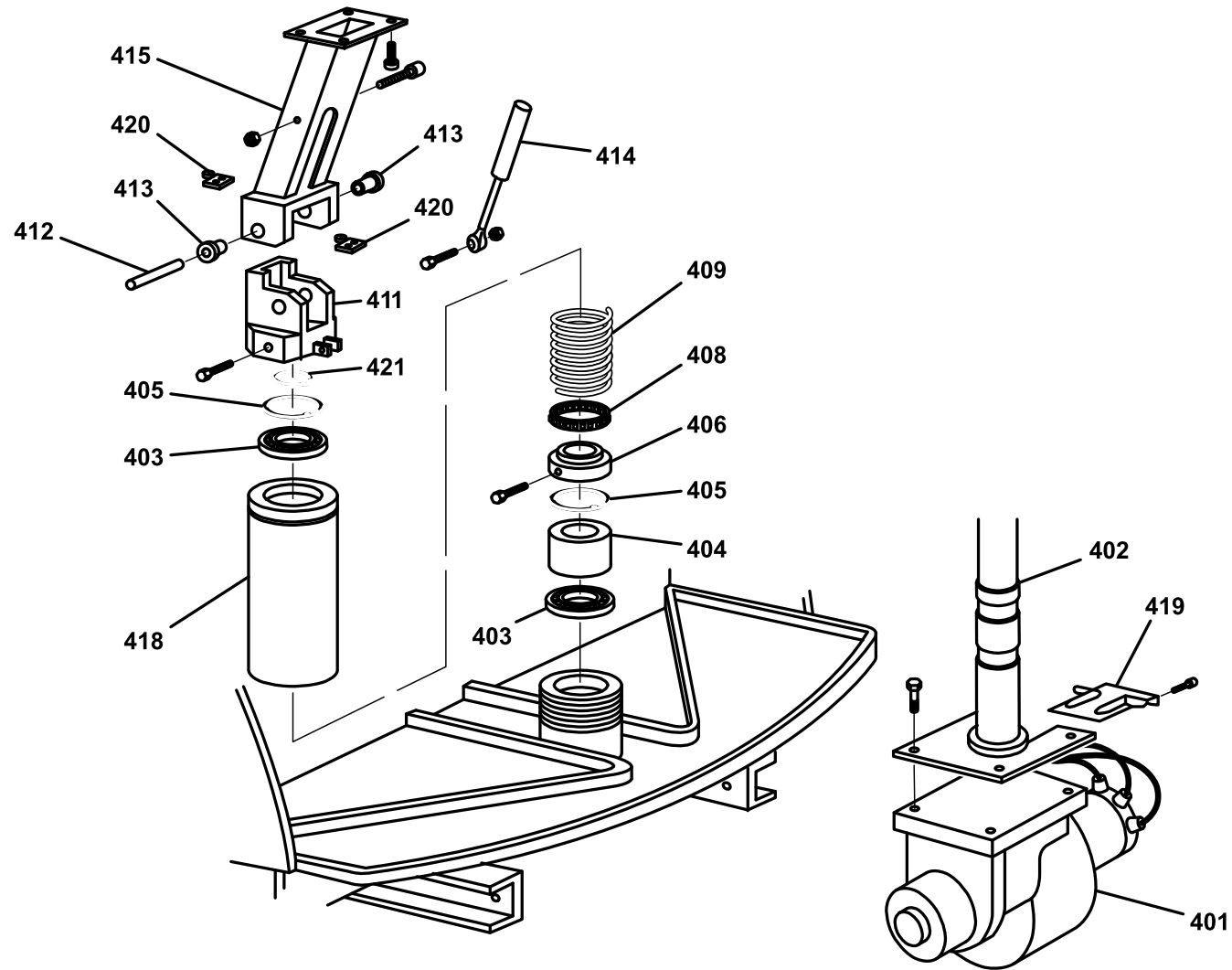
POSITION	PART NUMBER	DESCRIPTION	NOTES
135	▲ G070642	FUSEHOLDER + BLADE FUSE 7,5A	Attention: this item is valid for machines produced Interchangeable: YES
136	G077540	FUSE 160A (RFM REGHEL)	
137	G070603	FUSE HOLDER x FUSE 160Amp	
138	G070626	FUSE HOLDER + FUSE 160Amp	
139	S0300178047	BATTERY HOOD LX	
140	G040056+G040058+G040057	DESCRIPTION N/A	
141	S0300178048	PLEXIGLASS GUARD H=1600 LX	
142	G035001	BLIND NUT NYLON BLACK M8	
143	S0300177018	FIXING PRESSES LX	
144	S0300177025	CYLINDER PROTECTION SCREW LX12 PAINTED	
145	▲ S0309170253	ELECTRIC WIRING LX	Attention: this item is valid for machines produced from 26/11/2002 until 13/04/2004 Interchangeable: NO
145	▲ S000025001	CABLAGGIO ELETTRICO LX 12-16 '03	Attention: this item is valid for machines produced from 13/04/2004 until 07/09/2006 Interchangeable: NO
145	▲ P0CD00020	KIT WIRING '05 FX - LX	Attention: this item is valid for machines produced from 07/09/2006 Interchangeable: NO
146	PTB00006	SCHEDA RADDRIZZATORE	



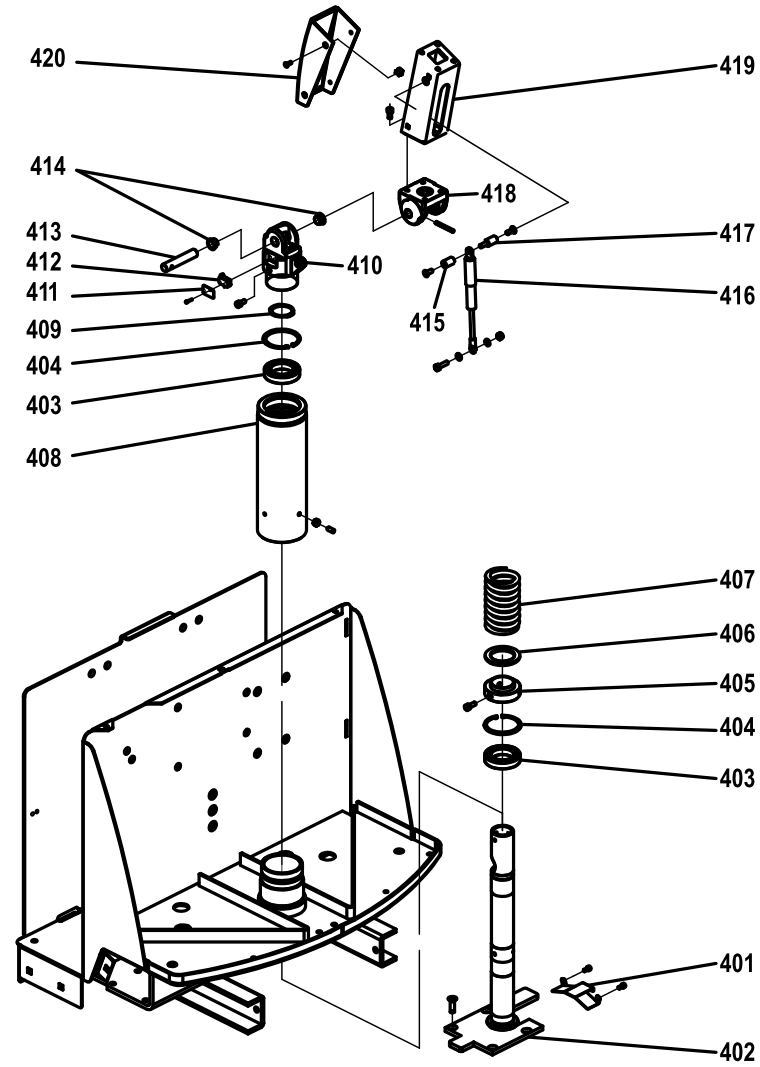
POSITION	PART NUMBER	DESCRIPTION	NOTES
250	S0300171033	PULLEY HOLDER LX12-16/16 PAINTED	
251	S0306055043	CAST IRON PULLEY PIN HOLDER BURNISHED	
252	G010401	BEARING 6204 2RS (20-47-14)	
253	S0300158042	MACHINED PULLEY (CAST IRON) FOR STACKER 12Q SINGLE CHAIN	
254	G062104	FLAYER CHAIN PIN BL544 D6x29	
255	G087008	MALE CAP DIN 908 GAS TMT 3/8"	
256	G085005	VALVOLA VUBA 3/8" FORO 0.8 CILINDRO LX VUBA0600F08	
257	G062006	FLAYER CHAIN STUB BL534-69P	
258	▲ GP90034	CYLINDER GASKET KIT LX12/16 NEW	Attention: this item is valid for machines produced from 26/11/2002 until 21/02/2008 Interchangeable: NO
258	▲ GP90042	KIT GUARNIZIONI CILINDRO LX12/16 NEW 08	Attention: this item is valid for machines produced from 21/02/2008 Interchangeable: NO
259	▲ S0306171032	PISTON LX 12/25-29-35	Attention: this item is valid for machines produced until 07/10/2001 Interchangeable: NO
259	▲ S030618140	DESCRIPTION N/A	Attention: this item is valid for machines produced until 07/10/2001 Interchangeable: NO
259	▲ S000026101	PISTON LX 16/16	Attention: this item is valid for machines produced from 08/10/2001 Interchangeable: NO
259	▲ S000025101	PISTON LX 12/16	Attention: this item is valid for machines produced from 08/10/2001 Interchangeable: NO
260	S0306176058	CYLINDER SPACER L. 5 LX 12/16	
261	S0306170249	COMPLETE CYLINDER LX 12/16 PAINTED	
262	▲ S000025401	CYLINDER RING NUT LX 12 '01	Attention: this item is valid for machines produced from 26/11/2002 until 21/02/2008 Interchangeable: NO
262	▲ S000025402	CYLINDER NUT LX12/LX14 FL '08	Attention: this item is valid for machines produced from 21/02/2008 Interchangeable: NO
263	S0306173055	PISTON ROD LX 12/16	
264	S0300185013	CHAIN HOLDER LX 12-14-16 ZINC PLATED	



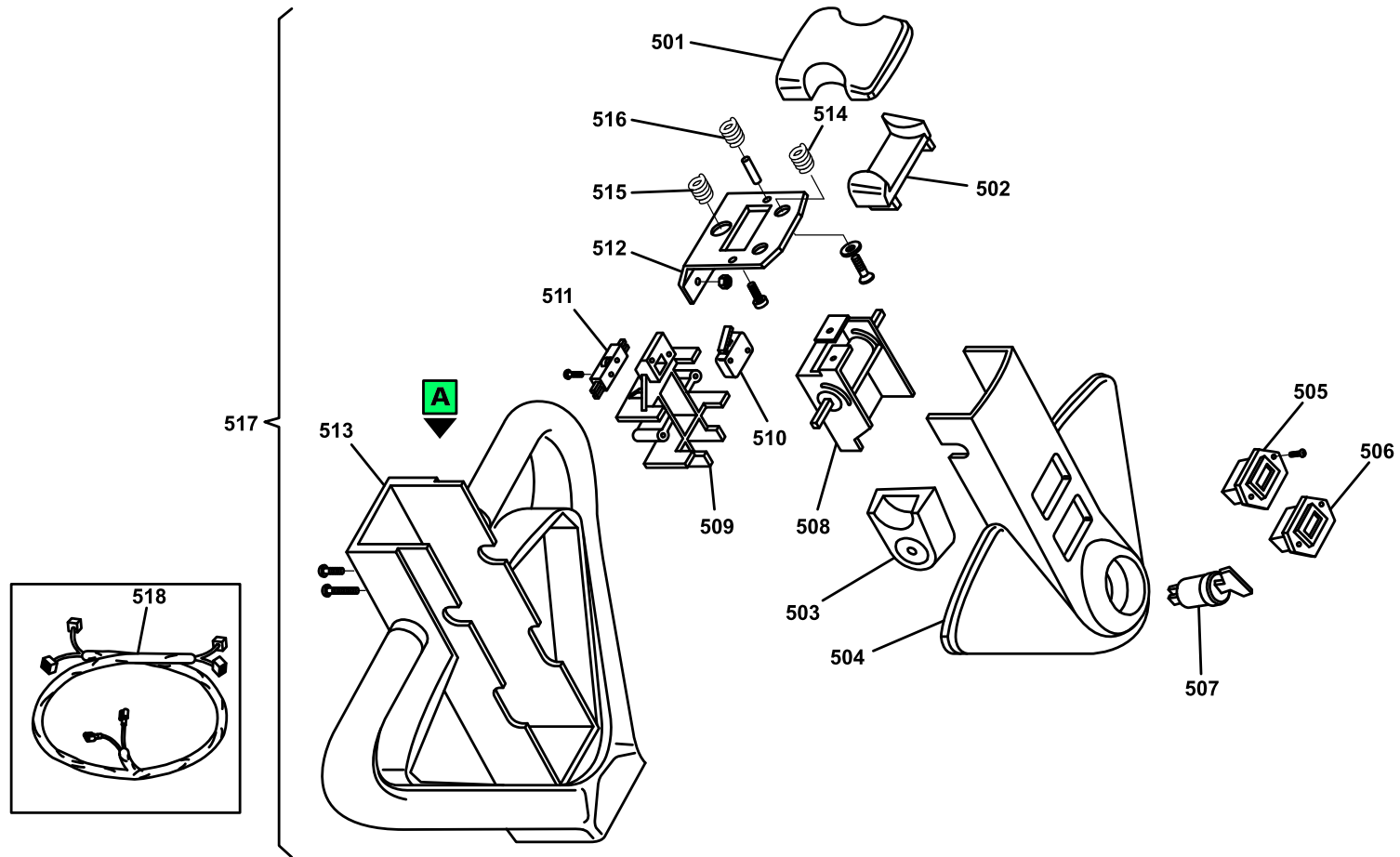
POSITION	PART NUMBER	DESCRIPTION	NOTES
301	G082235	BODY UP100K35+OIL SEAL (200740420141)	
302	G082236	CAP 00VC00 MDM140 (200978400140)	
303	G082190	VALVE CAP T817/0(HIDR.778800040)	
304	G082237	CAP TCEI 1/4 (200527360201)	
306	G082165	BODY GASKET SET UP100	
307	G082168	PUMP AP100/3,5 S.409+COP.748240010	
308	G082239	TANK UP100 P08 (200973450160)	
309	G082240	CAP TP SF. 1/2" (200527060502)	
310	G082227	TANK CLAMPING SET PL. UP100 6-14L.	
311	G082241	SUCTION SET (200759900940)	
312	G082090	FILTER CONV.150 MICRON (757500070)	
313	PLH00004	ENGINE 24V 2.2Kw	
314	G082242	JOINT COMPLETEE145-E163	
315	G082147	New code PLH00004	
316	G082127	COMPLETE RELAY 24V C.C. P.C-E-F-G (EF.)	
318	G081022	HYDRAULIC UNIT 224253001 UP100 (LX12 - LX16)	
319	PCI00004	DOOR BROOMS HYDRAULIC MOTOR	



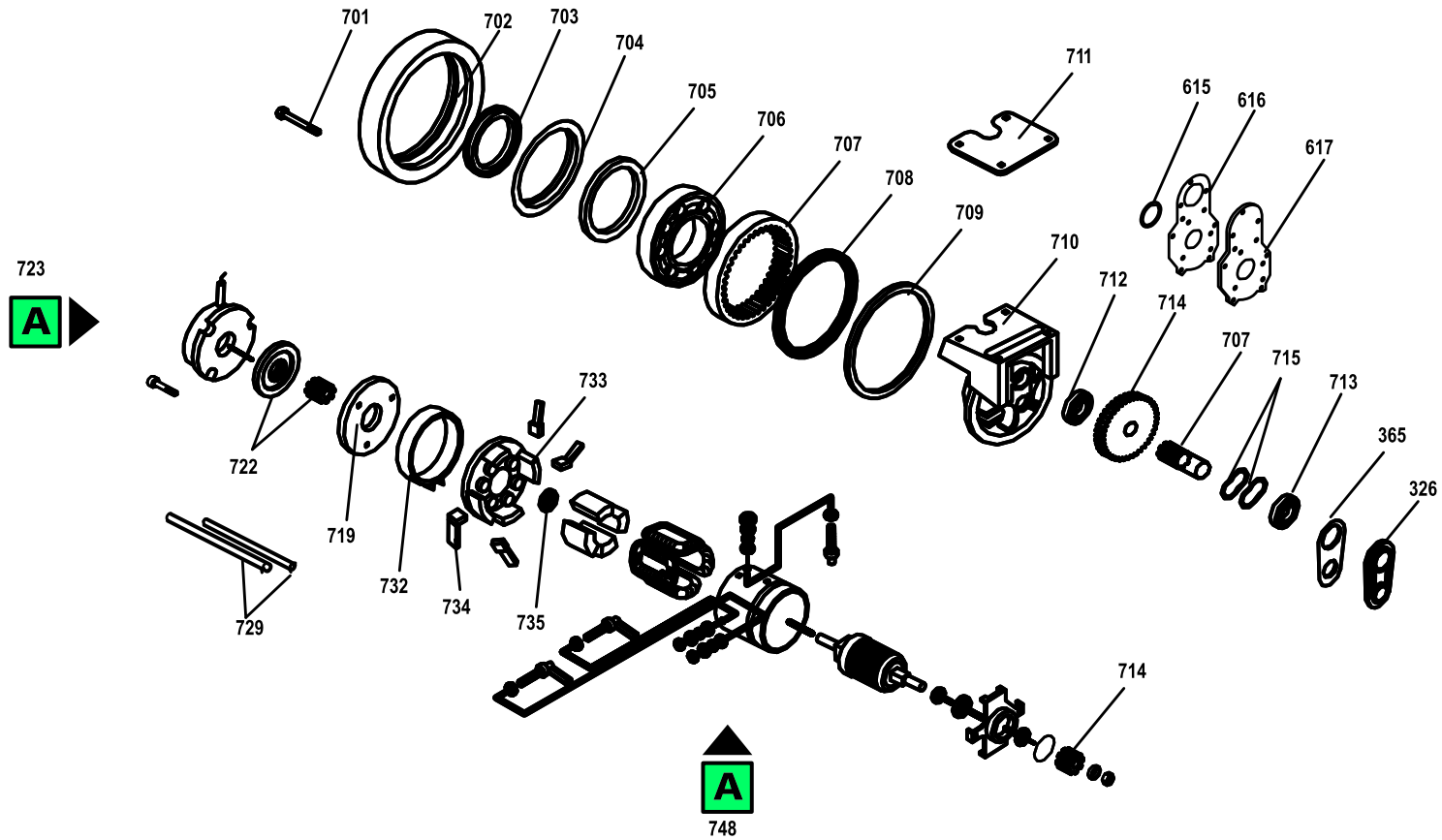
POSITION	PART NUMBER	DESCRIPTION	NOTES
401	G074427	MOTOR WHEEL SEPARATED EXCITATION 1.2KW LX12	
402	S0303170304	MOTOR WHEEL SUPPORT LX 12 PAINTED	
403	G010214	BEARING 6010 2RS(50-80-16)	
404	▲ S0303018002	MOTOR WHEEL SLIDING BUSHING L10	Attention: this item is valid for machines produced with serial number from 2003HL000541 Interchangeable: NO
405	G042280	INNER SEEGER 7436 I 80	
406	S0303016030	MOTOR WHEEL SHAFT WASHER L10	
408	S0313080057	COMPLETE MOTOR BEARING STACKER	
409	G001141	SPRING De78 F.11x185 P.22 x L10-L16-L/VT	
411	POKI00006	TILLER KIT L/K20	
412	S0304013027	HANDLE PIN GX-LX-K20 "BURNISHED"	
413	G016353	SELF-LUBRICATING BUSHING 20x28x35 L=20	
414	▲ P3ML00003	GAS SPRING 198.236.20	Attention: this item is valid for machines produced until 30/03/2004 Interchangeable: NO
414	▲ G001728	GAS SPRING GX AMA R20 Z10 LTA 255 mm 170 N	Attention: this item is valid for machines produced from 01/04/2004 Interchangeable: NO
415	S0304010142	HANDLE SUPPORT PAINTED "L"-"K20"	
418	S0303010139	SPRING LOADER LX-GX ZINC PLATED	
419	S0303010153	MOTOR WHEEL WIRING BRACKET L10-L16	
420	G075004	MICROSWITCH FOR TOW BAR L10	
421	G042150	OUTER SEEGER 7435 E 50	



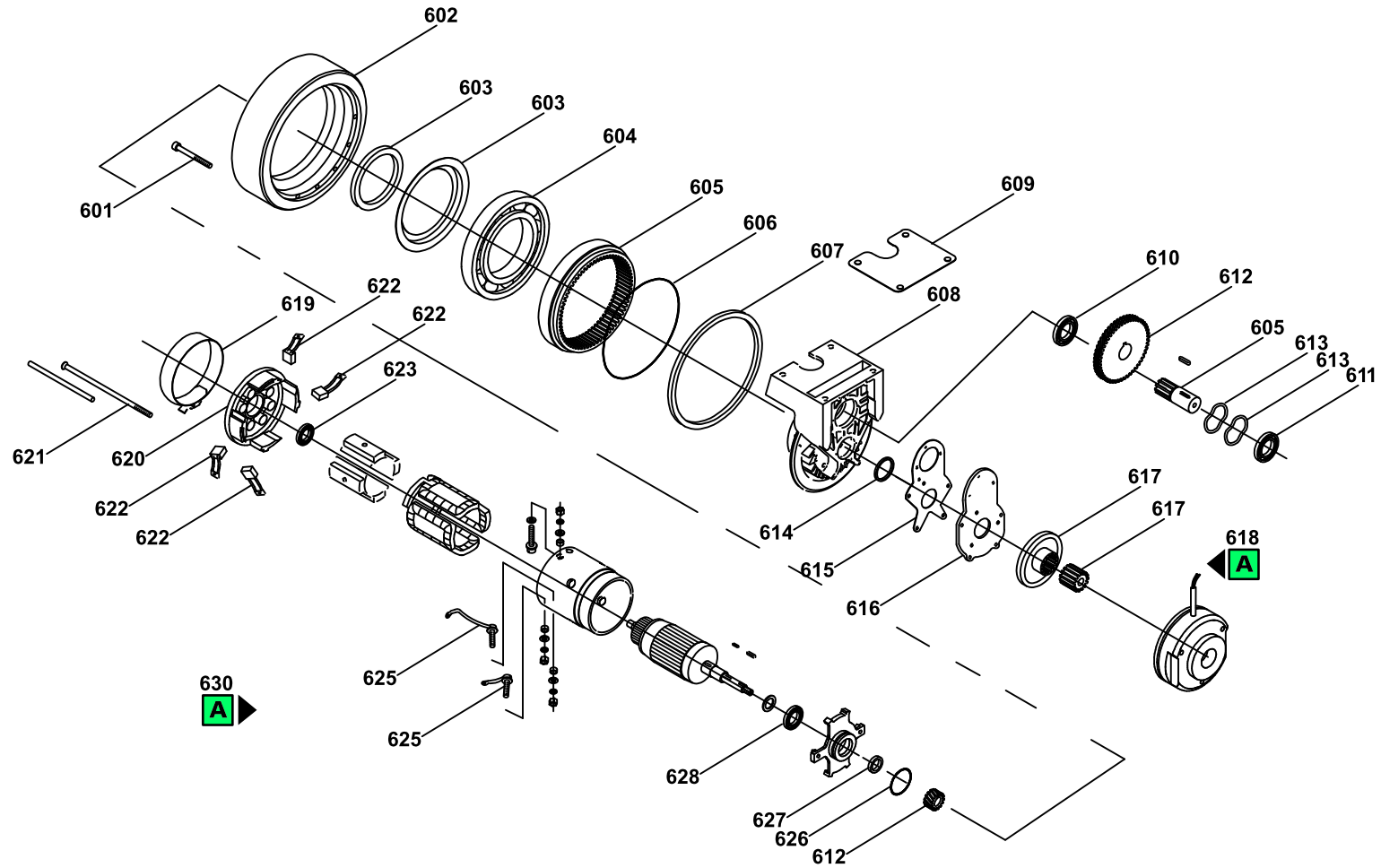
POSITION	PART NUMBER	DESCRIPTION	NOTES
401	S0303010153	MOTOR WHEEL WIRING BRACKET L10-L16	
402	S0303170304	MOTOR WHEEL SUPPORT LX 12 PAINTED	
403	G010214	BEARING 6010 2RS(50-80-16)	
404	G042280	INNER SEEGER 7436 I 80	
405	S0303016030	MOTOR WHEEL SHAFT WASHER L10	
406	S0313080057	COMPLETE MOTOR BEARING STACKER	
407	G001141	SPRING De78 F.11x185 P.22 x L10-L16-L/VT	
408	S0303010139	SPRING LOADER LX-GX ZINC PLATED	
409	G042150	OUTER SEEGER 7435 E 50	
410	V000044101-90050	SUPPORTO TIMONE GX-LX '03 VERN	
411	G09416	TILLER SWITCH PROTECTION PLATE GX-LX '03	
412	G075004	MICROSWITCH FOR TOW BAR L10	
413	S000025501	TILLER PIN GX-LX '03 BURNISHED	
414	G016307	BOCCOLA FLANGIATA DU 18-20	
415	S000025503	TILLER SPACER GX-LX '03	
416	G001728	GAS SPRING GX AMA R20 Z10 LTA 255 mm 170 N	
417	S000025502	BURNISHED TILLER SCREW-NUT SPACER GX-LX '03	
418	V000044102-90050	TILLER BRACKET GX-LX '03 PAINTED	
419	V09415-9005	TILLER BOX GX-LX '03 PAINTED	
420	S000025901	COPERCHIO TIMONE GX-LX '03	



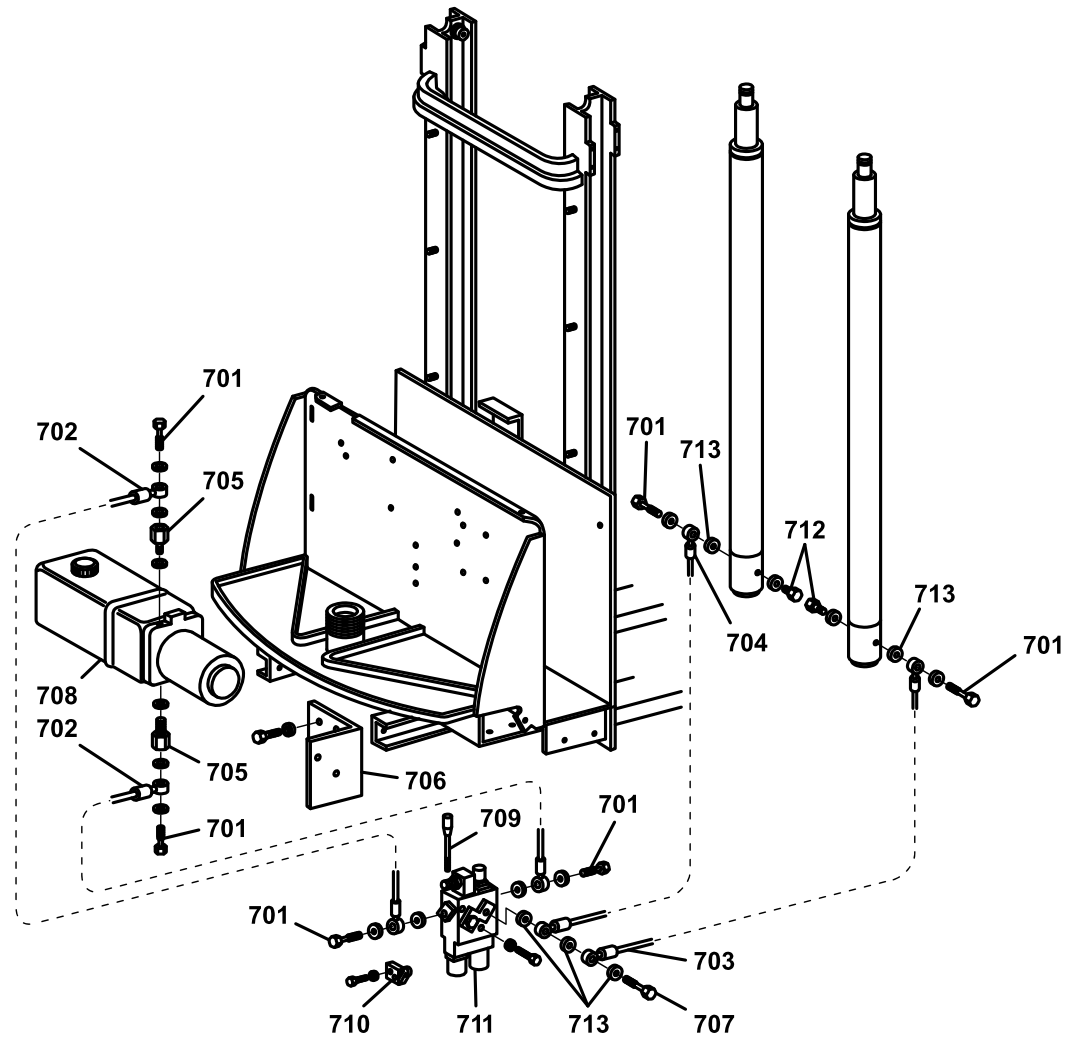
POSITION	PART NUMBER	DESCRIPTION	NOTES
501	S0304178033	HANDLE EMERGENCY '00	
502	S0304178032	HANDLE HORN ROCKER SWITCH '00	
503	S0304178031	HANDLE BUTTERFLY '00	
504	S0304178035	HANDLE COVER '00 x LX	
505	G079005	BATTERY LEVEL GAUGE CURTIS	
506	G079018	HOUR METER CURTIS	
507	G078058	KEY BLOCK RCH (RCH REGHEL)	
508	G077002	ELECTRONIC THROTTLE ET160	
509	S0304178034	HANDLE POTENTIOMETER SUPPORT '00	
510	G075017	MICROSWITCH XG52-J21	
511	G075016	MICROSWITCH 5A 250V	
512	G07330	HANDLE EMERGENCY SUPPORT PLATE '00	
513	S0304178044	COATED HANDLE '00 (POLY)	
514	G001132	SPRING De11 WIRE 1 - 4 TURNS L10 MOL/ZN	
515	G001134	SPRING De12,3 F1 - 9 TURNS - L=24 ZINC PLATED	
516	G001131	SPRING De5,6 F0,5 - 10 TURNS L20 ZINC PLATED	
517	▲ S0304190101	HANDLE '00 COMPLETE STACKER LX	Attention: this item is valid for machines produced from 26/11/2002 until 07/09/2006 Interchangeable: NO
517	▲ S000025026	TIMONIERA COMPLETA '05 FX - LX	Attention: this item is valid for machines produced from 07/09/2006 Interchangeable: NO
518	▲ S0319012001	CABLE TILLER L/G (CURTIS)	Attention: this item is valid for machines produced from 26/11/2002 until 07/09/2006 Interchangeable: NO
518	▲ P0CD00022	TILLER HARNESS '05 FX -LX	Attention: this item is valid for machines produced from 07/09/2006 Interchangeable: NO



POSITION	PART NUMBER	DESCRIPTION	NOTES
326	G073014	COVER	
365	G073013	GASKET	
615	PLC90117	PROTECTION RING	
616	PLC13912	MOTOR WHEEL GASKET CX14	
617	PLC13716	BRAKE HOLDER PLATE CX14	
701	G073242	SCREW WHEEL	
702	G073312	MOTOR WHEEL RUBBER RING FOR FX12-L/VT-L10/12 NEW-LX12	
702	G073328	MOTOR WHEEL ECOLOGIC RUBBER RING L10 NEW	
702	G073313	MOTOR WHEEL ADIPRENE RING L10 NEW	
702	PLC13290S	ANELLO MOT. GOMMA ECOLOGICA SCOLP. PER FX12-L/VT-L10/12 NEW-LX12	
703	G073006	MOTOR WHEEL RING	
704	G073302	PROTECTION RING	
705	G073303	New code G073302	
706	G073009	BEARING	
707	G073304	RETURN PINION + RING GEAR 8 HOLES	
708	G073305	O-RING FOR CROWN WHEL	
709	G073306	MOTOR WHEEL GASKET	
710	G073307	MOTOR WHEEL CASTING	
711	G073011	MOTOR WHEEL GASKET	
712	G073247	BEARING	
713	G073026	BEARING 16006	
714	G073029	PINION + DRIVER WHEEL	
715	G073030	COMPENSATION RING	
719	G073016	BRAKE HOLDER PLATE	
722	G073066	BRAKE LINING +HUB	
723	G073036	ELECTRIC BRAKE K1 HOLE CIMA 24V	
729	G073067	TENSION ROD+TUBE	
732	G073032	PADDLED CLAMP	
733	G073019	SLIP SUPPORT	
734	G073068	BRUSHES KIT MOTOR 24V	
735	G073249	SLIP BEARING 6201 2RSRC3	
748	G073338	COMPLETE MOTOR LX12	



POSITION	PART NUMBER	DESCRIPTION	NOTES
601	G073242	SCREW WHEEL	
602	G073312	MOTOR WHEEL RUBBER RING FOR FX12-L/VT-L10/12 NEW-LX12	
602	G073313	MOTOR WHEEL ADIPRENE RING L10 NEW	
602	G073328	MOTOR WHEEL ECOLOGIC RUBBER RING L10 NEW	
602	PLC13290S	ANELLO MOT. GOMMA ECOLOGICA SCOLP. PER FX12-L/VT-L10/12 NEW-LX12	
603	G073302	PROTECTION RING	
604	G073009	BEARING	
605	G073304	RETURN PINION + RING GEAR 8 HOLES	
606	G073305	O-RING FOR CROWN WHEL	
607	G073306	MOTOR WHEEL GASKET	
608	G073307	MOTOR WHEEL CASTING	
609	G073011	MOTOR WHEEL GASKET	
610	G073247	BEARING	
611	G073026	BEARING 16006	
612	G073029	PINION + DRIVER WHEEL	
613	G073030	COMPENSATION RING	
614	PLC90117	PROTECTION RING	
615	PLC13912	MOTOR WHEEL GASKET CX14	
616	PLC13716	BRAKE HOLDER PLATE CX14	
617	G073066	BRAKE LINING +HUB	
618	G073036	ELECTRIC BRAKE K1 HOLE CIMA 24V	
619	G073032	PADDLED CLAMP	
620	G073019	SLIP SUPPORT	
621	PLC00002	KIT TIRANTI GX10	
622	G073068	BRUSHES KIT MOTOR 24V	
623	G073249	SLIP BEARING 6201 2RSRC3	
625	G073052	TERMINAL BLOCK WITH CABLE	
626	G073256	O-RING SUPP. COMMAND SIDE	
627	PLC90118	OIL ENGINE PROTECTION LX	
628	G073327	CARTE ELECTRONIQUE AMICO VOIR REF G73327	
630	PLC30289	MOTORE COMPLETO LX12 '08	



POSITION	PART NUMBER	DESCRIPTION	NOTES
701	G084001	SCREW PERFORATE (4 HOLES) 3/8" L 29 -0,5/0 CH22	
702	G083013	TUBE R1AT 3/8"	
703	G083002	TUBO EN853 2SN 3/8" L=880 OCCHIO 3/8" - OCCHIO 3/8" - H OCCHIO 17,5+/-0,2 FORO 3/8	
704	G083012	TUBE R1AT 3/8"	
705	G084112	ADAPTER MALE 1/4 FEMALE 3/8	
706	S0300177019	DISTRIBUTOR CONNECTION LX 12-16 PAINTED	
707	G084002	SCREW PERFORATE DOUBLE (8 HOLES) 3/8" L 49 -0,5/0 CH22	
708	G081022	HYDRAULIC UNIT 224253001 UP100 (LX12 - LX16)	
709	G085004	LEVER STICK AL001 HDM10 M08X125	
710	G075004	MICROSWITCH FOR TOW BAR L10	
711	G085008	DISTRIBUTOR HDM140K02 151/MOD.1/429Z3+VALVOLA	
712	G087007	MALE CAP 3/8 TME30/8 GAS	
713	G096109	RUBBER-METAL WASHER RGM 3/8"	