

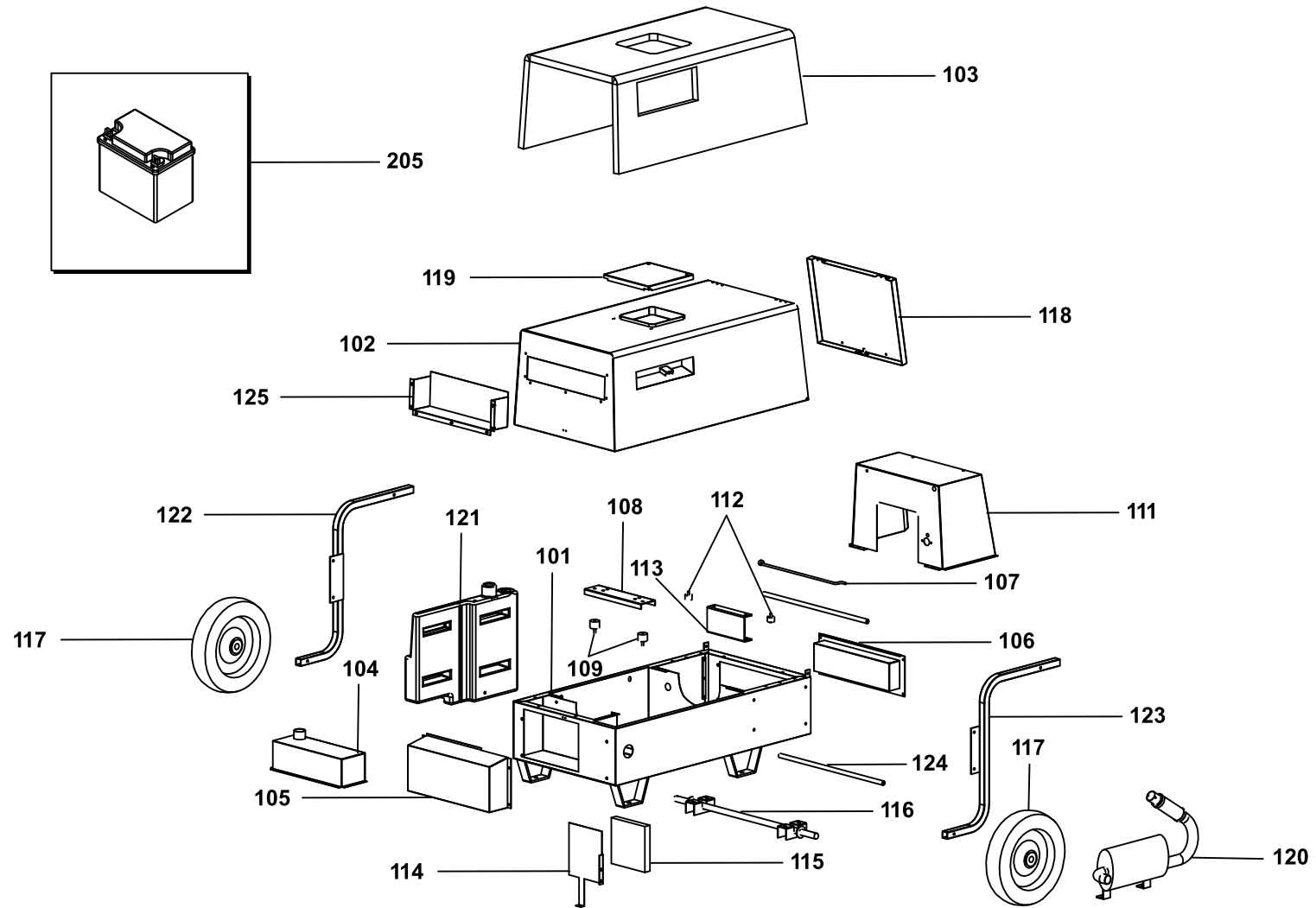
## Spare Parts Catalogue

# P12000-HATZ+CONN

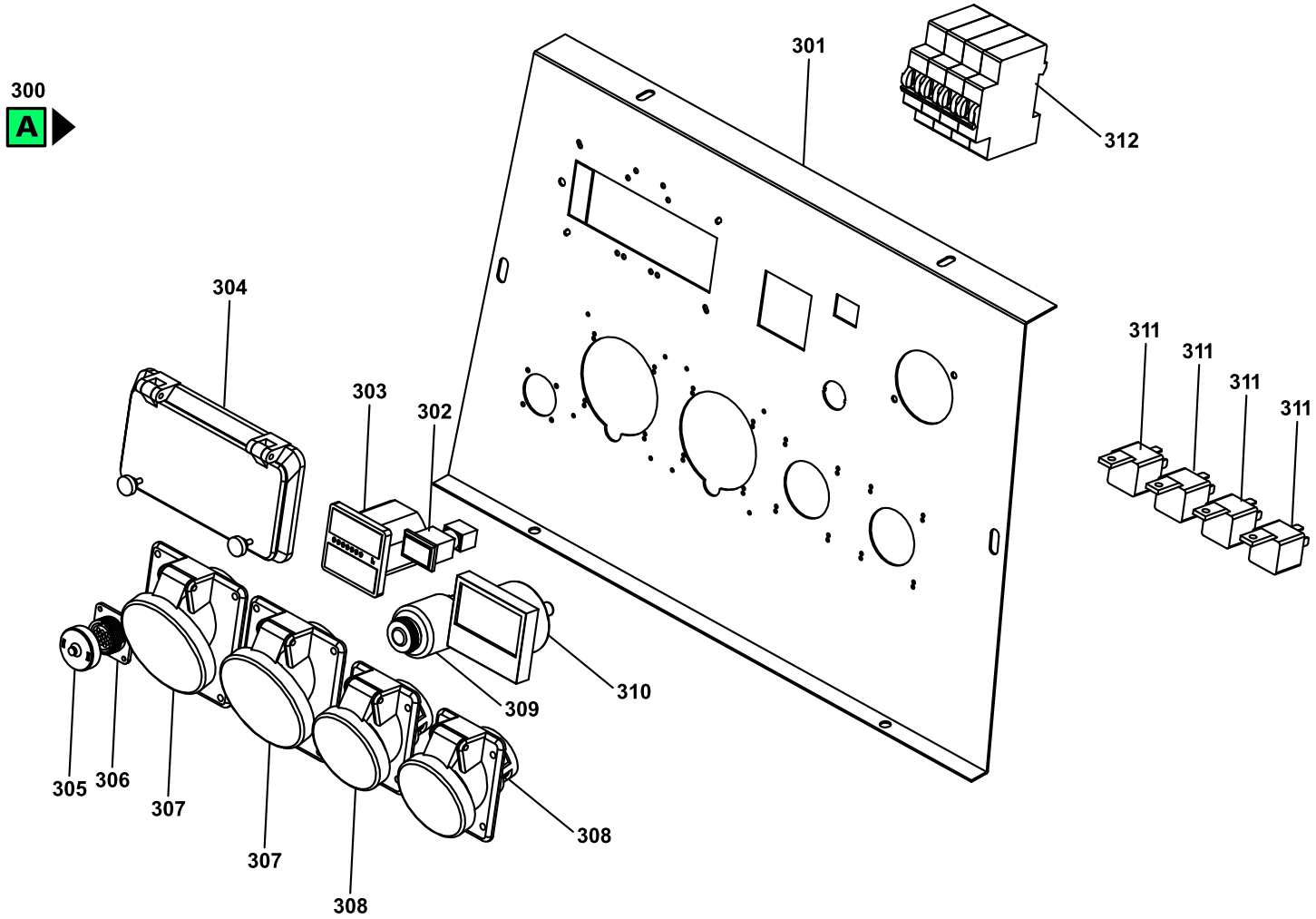
### Generating sets

Valid for machine code: PF113TZA00F

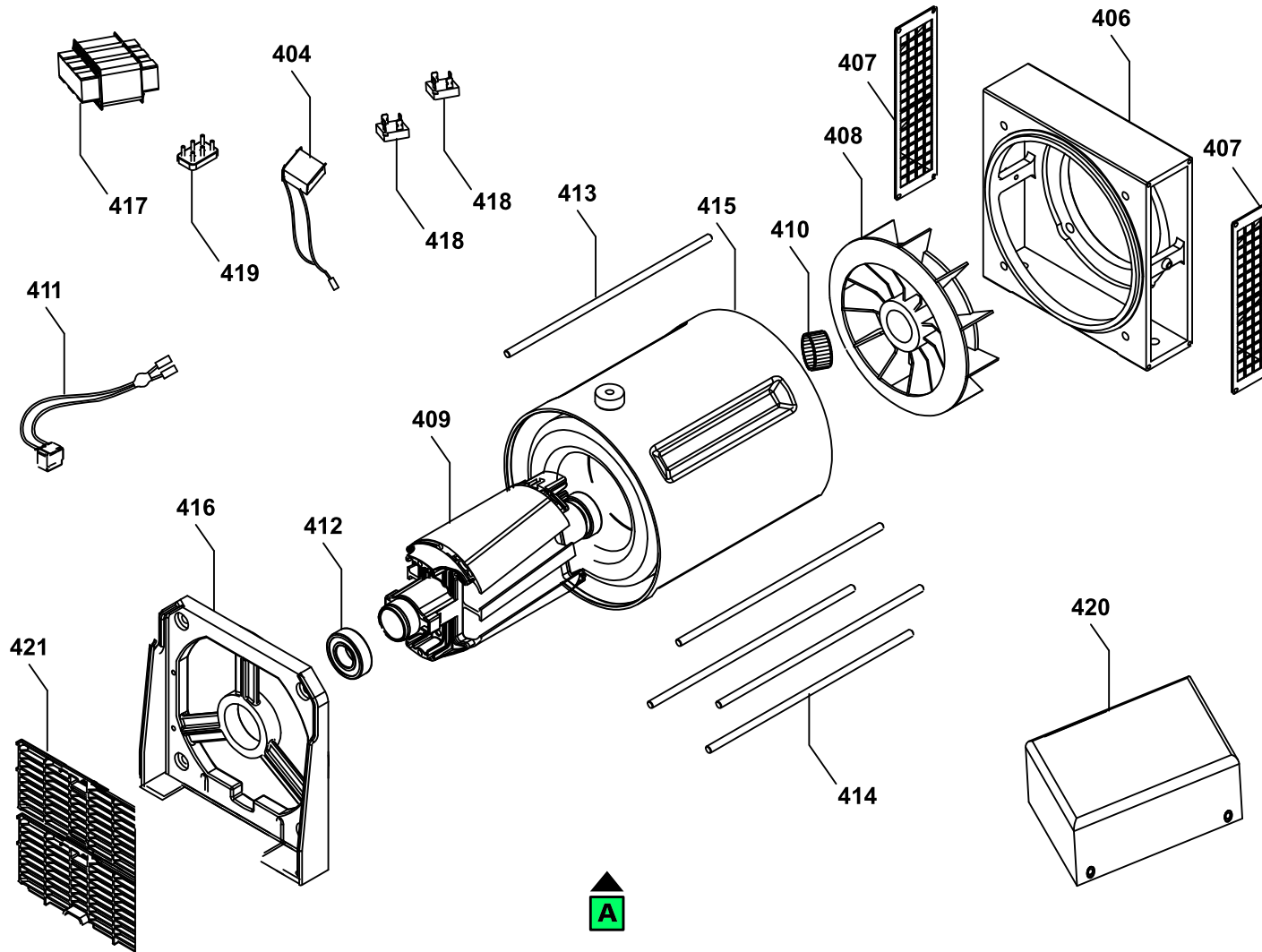
Revision: 0 (06/2009)



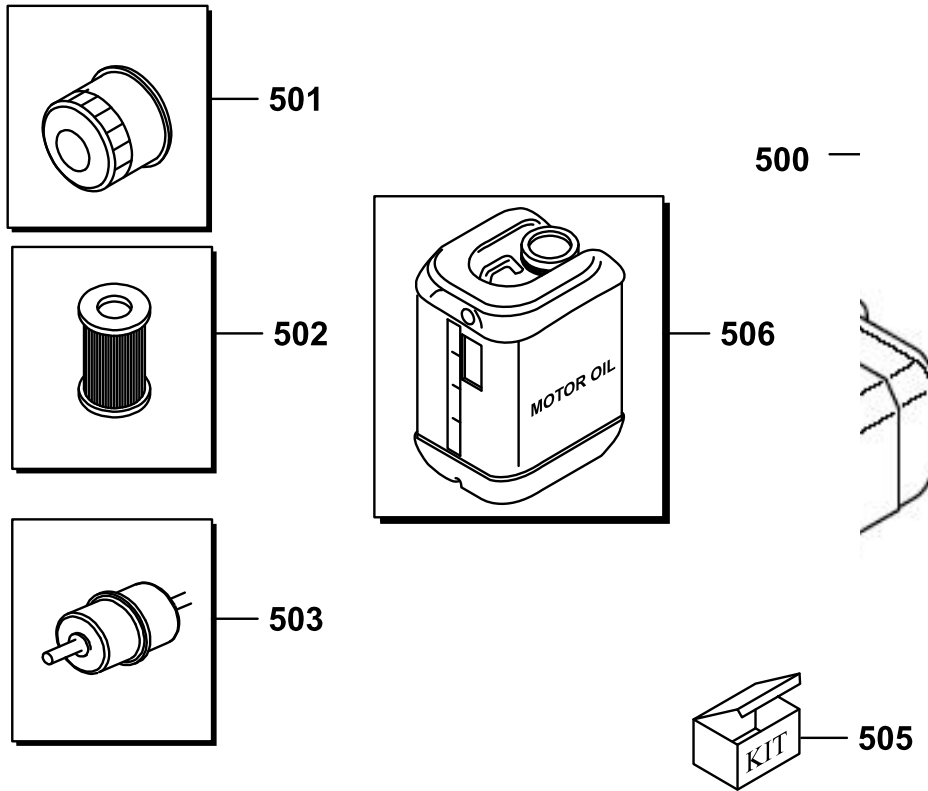
POSITION	PART NUMBER	DESCRIPTION	NOTES
101	VA50022003-9005B	P12000 BLACK ORANGE PEAL PAINTED BASE	
102	▲ VA10001001-PRAMACB	COFANO S12000-W300 VERNICIATO	Attention: this item is valid for machines produced Interchangeable: YES
102	▲ SM5Z001883	CANOPY P12000 TZEDI PRAMACB	Attention: this item is valid for machines produced Interchangeable: YES
103	SA10001902	SOUND ABSORBER FOR CANOPY S12000-W300	
104	V23580814-9005B	ENGINE COMPLETE AIR CONVEYOR D300 HATZ - PAINTED	
105	V23590849-9005B	COMPLETE AND PAINTED REAR EXTERNAL CONVEYOR D300SS	
106	V23550787-9005B	COMPL. ANT. DOOR D300/93 PAINTED	
107	Z23550821	COMPLETE HOOD LIFTING BAR D300/93 Zn	
108	GA7268	SUPPORT MOTOR RD210 D.300/93	
109	G052121	CYLINDRIC SILENT-BLOCK MF-40x30-M8x23-M8-55	
110	VA8919-9005B	CONVOGLIATORE INFERIORE GEN. S12000 VERNICIATO	
111	VA50013001-9005B	CONVOGLIATORE SUP.GEN.S12000 VERNICIATO	
112	G052119	CYLINDRIC SILENT-BLOCK MF-30x20-M8x15-M8-45	
113	VA7395-9005B	ALTERNATOR SUPPORT S 9/12 *RED PAINTED	
114	VA7639-9005B	SOUND PROOF BARRIER D 300 SS	
115	SA10001904	AIR INTAKE SIDE FOAM S12000-W300	
116	V23550789-9005B	COMPLETE PAINTED AXLE D.300/93	
117	G053114	HALF-FULL WHEEL D400x95 D300/93 ECONOMY ZINC F.25X80	
118	VA7267-PRAMACB	PAINTED COUNTER PANEL COMMANDS D300/93	
119	VA7391-PRAMACB	DOOR FOR HOOK HOUSING - PAINTED	
120	G92046	MUFFLER D-225/300 KS-6,5/9/12	
121	G51440	FUEL TANK Lt 17 D.300/KS 9/12	
122	V23550790-9005B	TRANSPORTATION HANDLE RIGHT SIDE D300/93 PAINTED	
123	V23550791-9005B	TRANSPORTATION HANDLE SX D300/93 PAINTED	
124	V23550808-9005B	HANDLE STIFFENER D.300/93 PAINTED	
125	VA10001002-PRAMACB	DEVIAT. FLUSSO ARIA MOT. S12000/W300	
205	G089006	BATTERY 45Ah 12V	



POSITION	PART NUMBER	DESCRIPTION	NOTES
300	SA50022011	P12000 TP CONTROL PANEL - 14 POLES CONNECTOR	
301	GA8004	SWITCHBOARD PANEL S12000TREDI	
302	G83528	OIL PRESSURE PILOT LIGHT GR.EL.COF. TN	
303	G079033	PANEL MOUNT HOUR METER (230V)	
304	G070312	IP55 COVER 8 MODULES DIN	
305	G071091	SEALING CAP WITH BEAD CHAIN - 14 POLES CONNECTOR	
306	G071021	FEMALE CONNECTOR 14CONTACTS COM. DIST.	
307	G071125	PANEL MOUNT SOCKET 3P+N+T 400V 16A CEE	
308	G071122	PANEL MOUNT SOCKET 2P+T 230V 16A IP44 CEE - INCLINED	
309	G075357	STARTER KEY SWITCH	
309	G76926	KEY BLOCK BODY FOR STARTER SWITCH	
310	G079025	VOLTMETER 0-500V D56	
311	G079583	RELE' 12V 1 30/20A 12.040.000	
312	G75488	MAGNETOTHERMIC SWITCH 4P 16A 4,5KA	



POSITION	PART NUMBER	DESCRIPTION	NOTES
400	▲ PAZ00022	ALTERNATOR THREE PHASES T20 15 KVA 50 HZ 2 POLES 3000 C38 12V	Attention: this item is valid for machines produced Interchangeable: YES
400	▲ AZT12000AH000XZ	ALTERNATOR AT-118L 12/230/400/50/3000/12 CONE 38	Attention: this item is valid for machines produced Interchangeable: YES
404	PAZ8PLFLDS001	FILTER CE AT118	
406	G70945	COVER AT-118	
407	G70967	PROTECTION GRID AT-118	
408	PAZ9PLVN01048	FAN AT118 CONE 38	
409	G70962	ROTOR AT-118L CONE 38	
410	PAM90302348	SLIP RING TR2	
411	G70946	BRUSH HOLDER AT-118	
412	G010410	BEARING 6205 2RS (25-52-15)	
413	G70956	CENTRAL TENSION ROD AT-118L	
414	G70969	SIDE TENSION ROD AT-118L	
415	G70949	CARCASSA CON STATORE AT-118L 12kVA C.B.	
416	G70966	COVER AT-118 CONE 38	
417	G70953	3-PHASE COMPOUND AT-118L 12Kva	
418	G70236	1-PHASE DIODE BRIDGE 25 A - 800 V	
419	G70950	CONNECTION TERMINAL BOARD AT-118	
420	G70954	SHUTTER PANEL AT-118	
421	G70944	COVER AT-118	





POSITION	PART NUMBER	DESCRIPTION	NOTES
500	EZP209CHD3W	Engine Hatz 2G40 Air_3000_Mech_cone 38-_12Vdc__Ver/Sp:181 C	
501	PEZ00010	OIL FILTER 2G40	
502	PEZ00017	AIR FILTER	
503	PEZ00029	FUEL FILTER	
503	G080101	FUEL FILTER FB1-01544 5u	
505	P3KI00107	MAINTENANCE KIT P12000 HATZ 2G40	
506	P3KI00299	Kit Pramac Power	