

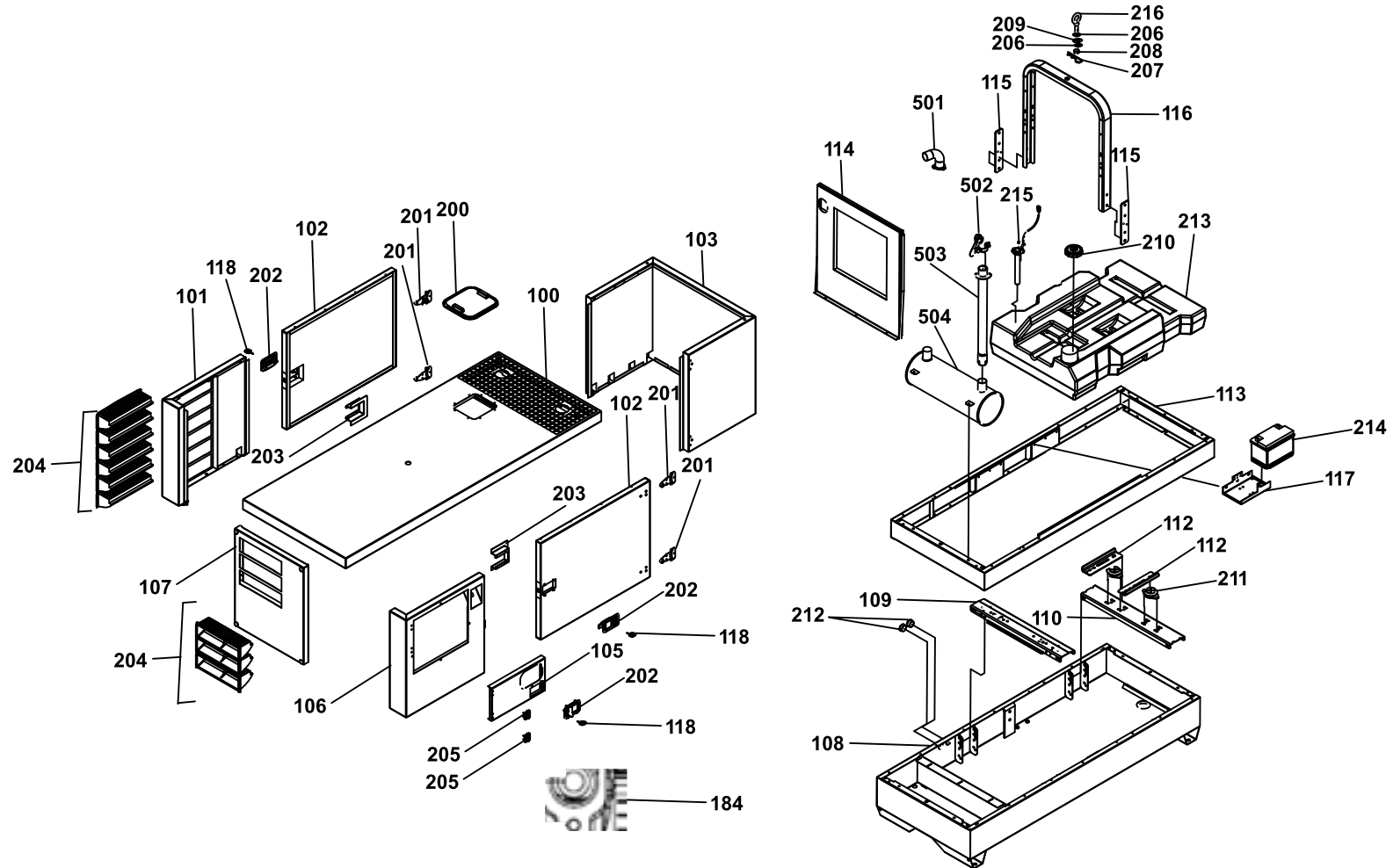
Spare Parts Catalogue

GSW65P-UNI-(ALT.S)-MCP

Generating sets

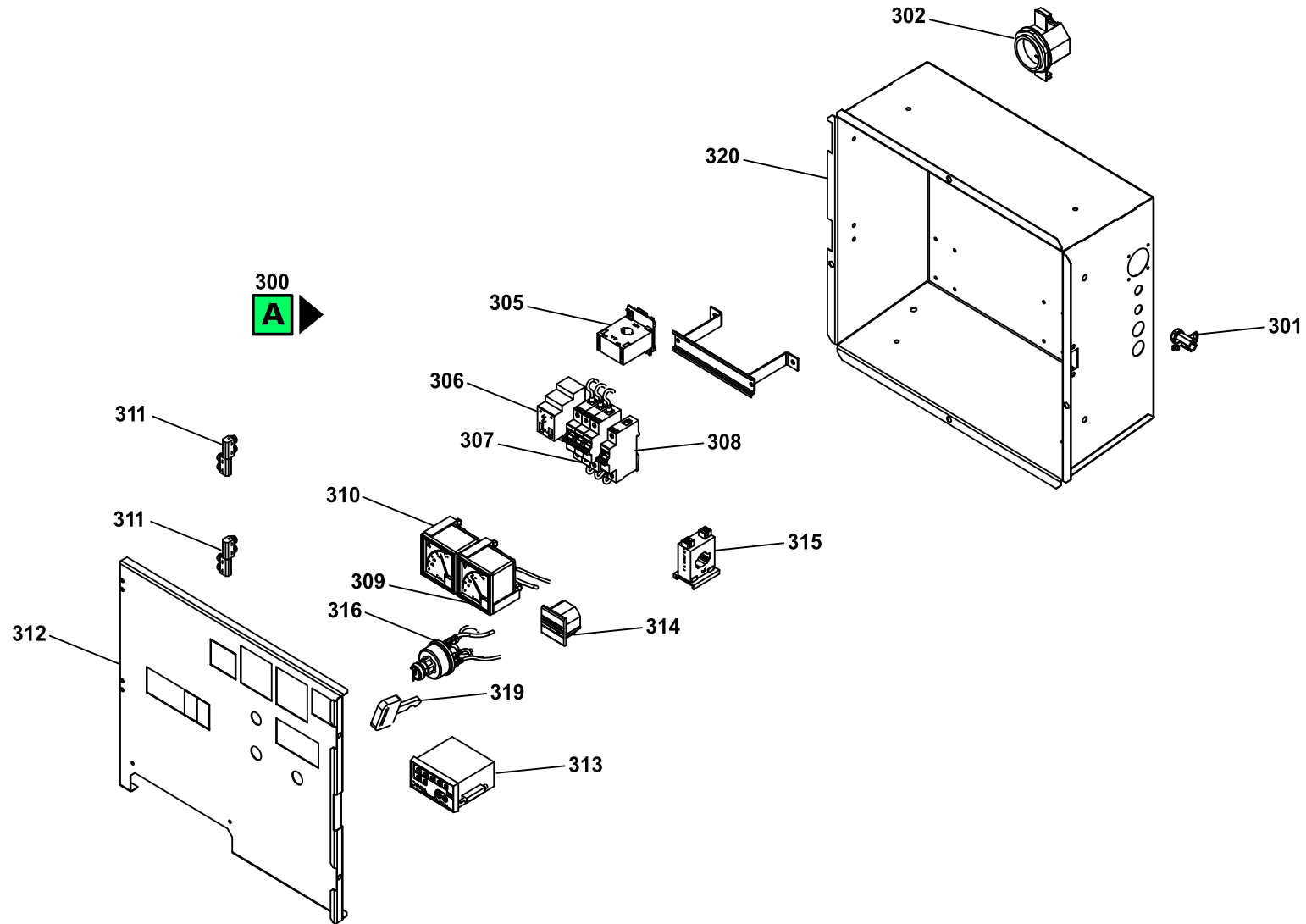
Valid for machine code: SU600TPA000

Revision: 0 (01/2012)

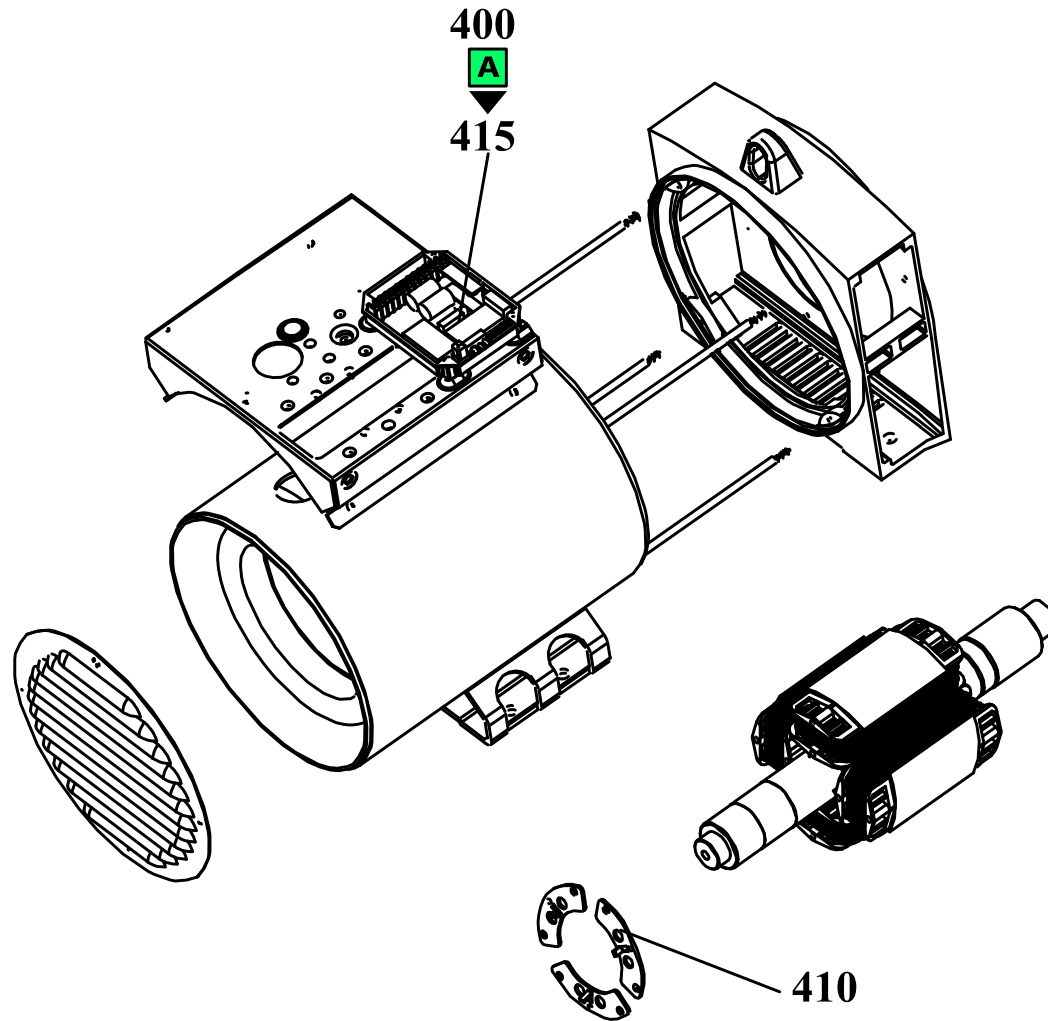


POSITION	PART NUMBER	DESCRIPTION	NOTES
100	SM5Z002275	ROOF GSL65D // GSW65-80P UNI (SOUNDPROOF ROCK WOOL 40MM -RAL PRAMACB)	
101	SM5Z002048	PANEL LATERAL ASPIRATION GSW15-22, GSL30-65D. (LANA ROCA 40MM - RAL PRAMACB)	
102	SM5Z002273	DOOR UNI GSL65D // GSW65-80P (SOUNDPROOF ROCK WOOL 40MM -RAL PRAMACB)	
103	SM5Z002272	PANEL EXPULSION UNI GSL65D // GSW65-80P (SOUNDPROOF ROCK WOOL 40MM -RAL PRAMACB)	
105	VM9947-PRAMACB	DOOR CONTROL PANEL UNI (PAINTED)	
106	SM5Z002267	LATERAL PANEL CONTROL PANEL SIDE UNI GSL-GSW (SOUNDPROOF ROCK WOOL 40MM -RAL PRAMACB)	
107	SM5Z002052	FONDO ASPIRACION GSL65D E/C (LANA ROCA 40MM - RAL PRAMACB)	
108	VM5C406006-9005B	BASE FRAME GSL65D // GSW65-80P UNI (PAINTED)	
109	VM1296-9005B	SOPORTE MOTOR REV-01 GSL-GSW UNI (PINTADO)	
110	VM9966-9005B	ALTERNATOR SUPP. GSL65-GSW80P UNI (PAINTED)	
111	VM9980-9005B	SUPPORT LEFT "L" ALTERNATOR L=330MM E=6 (PAINTED)	
112	VM9981-9005B	SUPPORT RIGHT "L" ALTERNATOR L=330MM E=6 (PAINTED)	
113	VM5S806022-PRAMACB	SUPPORT FOOT GSW65-80P WP UNI (PAINTED)	
114	SM5Z002277	SEPARATOR CONVEYER GSW65-80 UNI PERKINS 1103/4A (INSULATED ACOUSTIC FOAM 30MM - RAL 9005B)	
115	VM9550-9005B	PLETINA FIJACION PUENTE ELEVACION 70x8 GSW30-50Y PINT.	
116	VM5E900007-9005B	PUENTE DE ELEVACION REFORZADO CANOPY C-1 1600Kg. PINT	
117	VM5H200013-9005B	BANDEJA BATERIA 75AH (PINTDA)	
118	G001412	KEY FS877 (1 UNIT)	
184	G078514	FUEL TRANSFER PUMP	
200	SM5RP10000	KIT ROOF CAP ABS MAGNUM	
201	G040037	HINGE INOX 137x85 MM HERCOR	
202	G040038	PADDLE LATCH WITH KEY 140x90 MM HERCOR	
203	G058017	PROTECTION BOX FOR DOOR HANDLE IN BLACK NYLON	
204	SM5Q000101	ASPIRATION GRILL STANDARD (PLASTIC) + STRIP SEAL	
205	G040011	PLASTIC HINGE ZN-PA.001	
206	G041227	PLAIN WASHER 6592 D.27	
207	G044110	SPLIT PIN D 5x50mm	
208	G032118	STANDARD NUT 5588 M27 ZN	
209	G052405	JUNTA CARGA 28X44X3	
210	G052224	CAP Ø113MM WHIT GASKET	
211	G052932	SILENT-BLOCK BELL BSB 95 C60 M-12.	
212	G052215	RUBBER CAP D=47mm H=22 mm PVC BLACK REF.12694	
213	SM5F400107+VM2050-9005B+G080738	DESCRIPTION N/A	
214	G099300024	STARTER BATTERY 12 V - 70 Ah C/20 DIM. MAX 275x175x190	
215	G080347	FUEL GAUGE FLOAT H= 270 IN12/ OUT 10mm	
216	G001625	LIFTING EYE 59/M27	

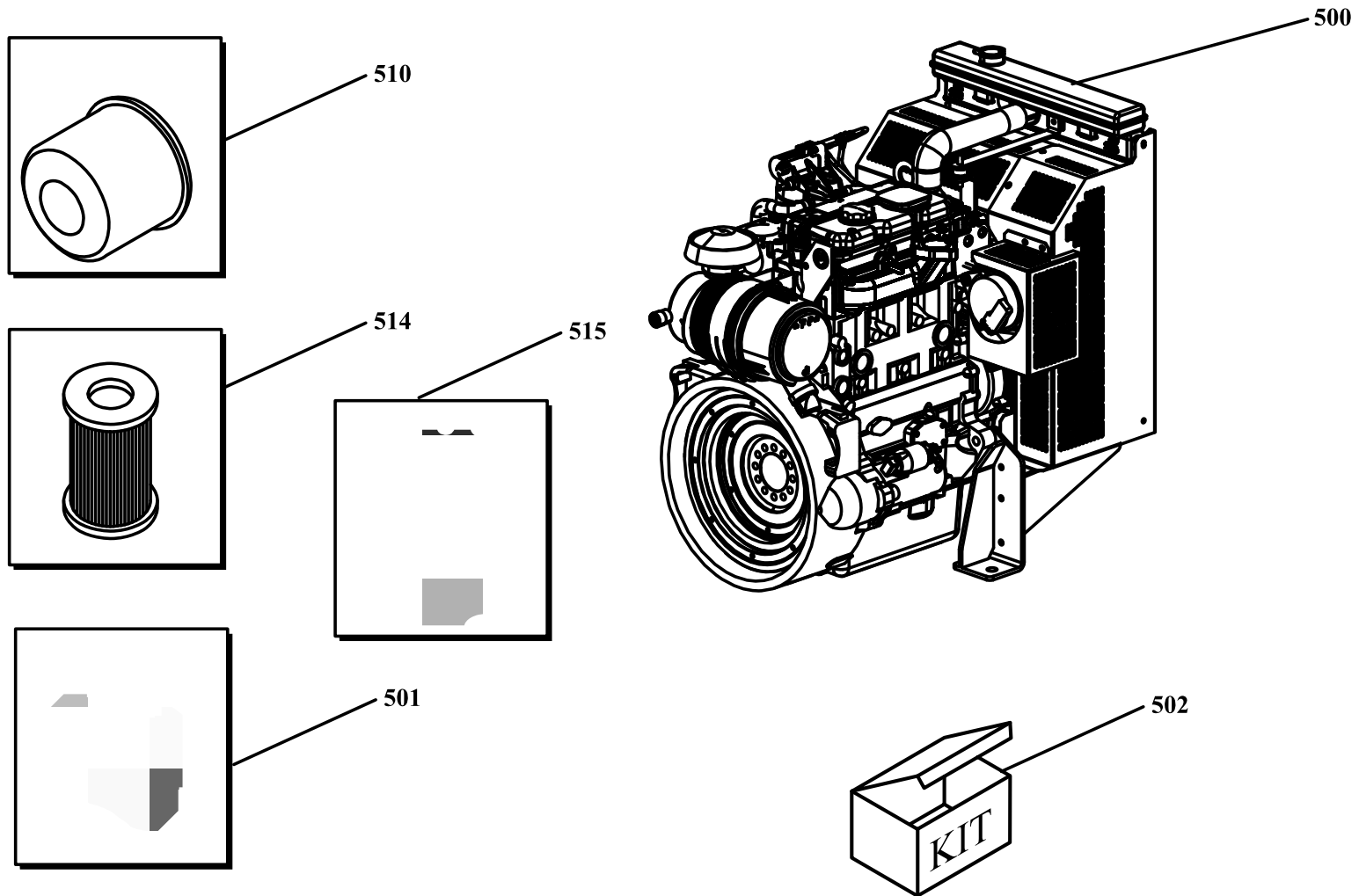
POSITION	PART NUMBER	DESCRIPTION	NOTES
501	SM5G800037	COLECTOR ESCAPE GSW45/65 UNI INSONORO PERKINS 1103A	
502	G088333	PARAPLUIE D'ECHAPPEMENT Ø60	
503	VM5G800016-9005O	CHIMENEA RIGIDA SALIDA ESCAPE CON BRIDA FIJACIÓN PARA GSW15-22 GSL30-42 E/C. PINTADA ANTICALOR NEGRO	
504	VM5G300016-9005O	MUFFLER GSL30-40-65D TL002	



POSITION	PART NUMBER	DESCRIPTION	NOTES
118	G001412	KEY FS877 (1 UNIT)	
300	SM5P33U013	CUADRO MCP (MC-01) UNI 100A 3P III CONEX. Y 50Hz 12V	
301	G070278	BLACK RACORD PG9 DN 13/10 MADE OF NYLON ACCORDING TO BS EN 50086 / UL94	
302	G070277	BLACK RACORD PG48 [REF. SCHLEMMER 3805021]	
303	GM1046	SOPORTE INTERRUPTORES MODULARES CUADRO UNI [PLEGADO]	
304	G079565	CARRIL DIN 35 MM SIMETRICO [REF. WURTH 0975490101]	
305	G079251	INTENSITY TRANSFORMER IBA 50/5A	
306	G077754	EARTH FAULT RELAY RD2 REF.2CSM142120R1201	
307	G075732	MAGNETOTHERMAL SWITCH SERIE HTI 3P 100A B CURVE 10 KA	
308	G075340	SHUNT TRIP TELE L2 110-415V Serie EP/FP	
309	G079024	VOLTMETER 500 V72x72	
310	G079028	PANEL MOUNT AMMETER 0-250A	
311	G051639	PLASTIC HINGE EMKA (REF. 1079-U4)	
312	GM1131	FRONTAL MCP UNI 16-125A 50-60Hz CON SALIDA DE CABLES [PLEGADO]	
313	G076400	ENGINE PROT. BOARD MC-01	
314	G079033	PANEL MOUNT HOUR METER (230V)	
315	G079243	TOROIDAL TRANSFORMER TTD22 REF.560090	
319	G075310	STARTER KEY SWITCH	
320	VM1030-9005B	CAJA CUADRO UNI [PINTADO]	



POSITION	PART NUMBER	DESCRIPTION	NOTES
400	AFX60FUT000Z	ALTERNATOR UCI224E 60/230/400/50-60/1500/12M - FORM MD35 - SAE3 - JOINT 11" ½ - STAMFORD	
410	PAFRSK1101	BCI DIODES AND RADIO EFFECTS SUPPRESSOR KIT	
415	PAF460E000	VOLTAGE REGULATOR 24602 STAMFORD	



POSITION	PART NUMBER	DESCRIPTION	NOTES
500	EPW811FUM5Z	Engine Perkins 1103A-33TG2 Water_1500__SAE3-11"½_12Vdc__Ver/Sp:DK51280	
501	PEP00132	AIR FILTER	
502	P3KI00332	MANTEINANCE KIT GBW30P1103A-33G NEW FILTER	
510	PEP00268	OIL FILTER	
514	PEP00147	FUEL FILTER	
515	PEP00144	PRE FILTER	